



# AMERICAN EAGLE

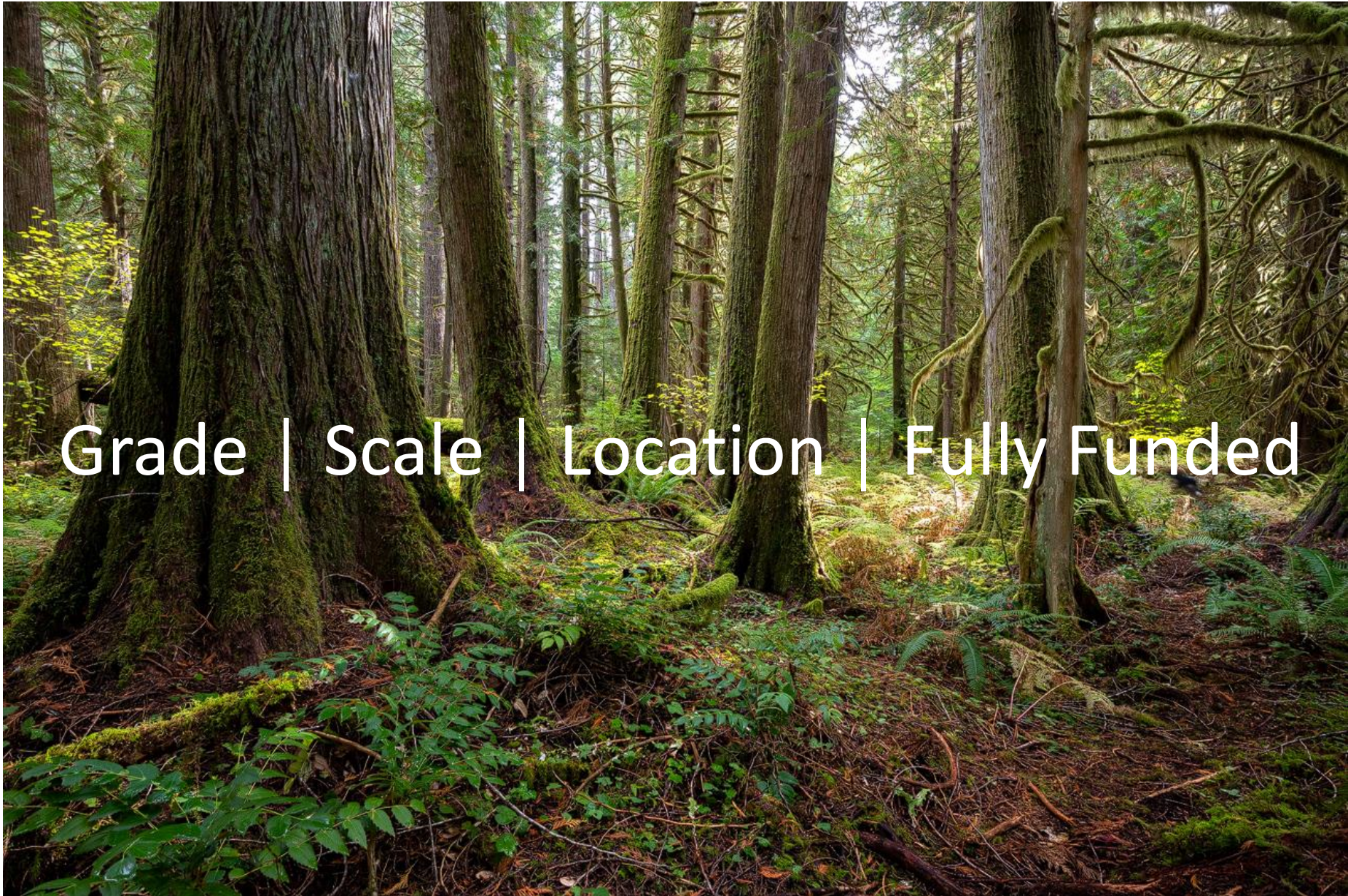
---

## Canada's Most Exciting Porphyry Discovery

---

NAK23-17: 302 metres of 1.09% Copper Equivalent





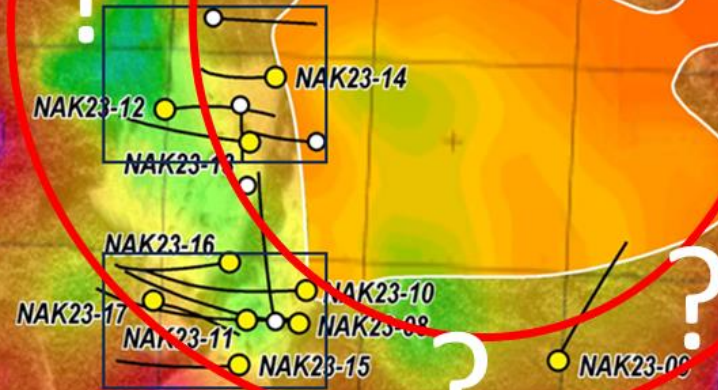
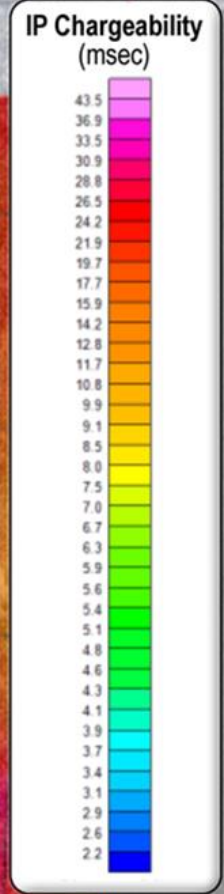
Grade | Scale | Location | Fully Funded





# American Eagle's NAK Property

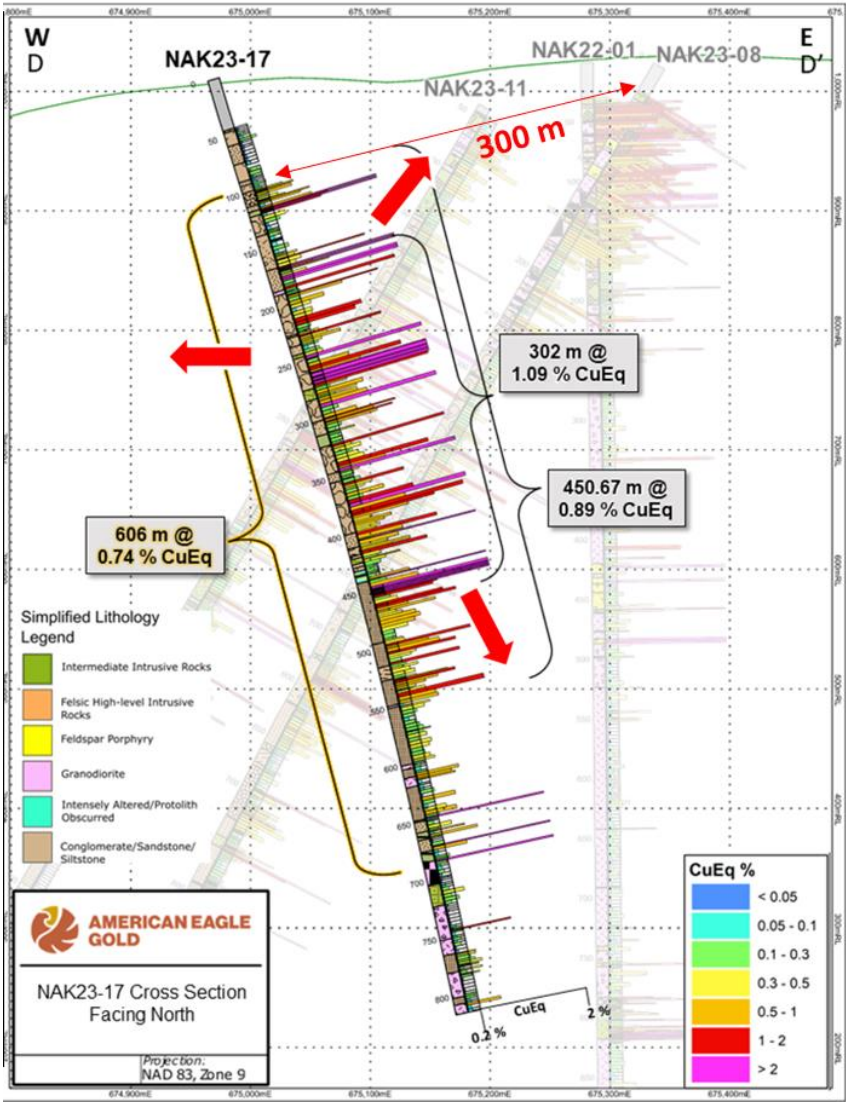
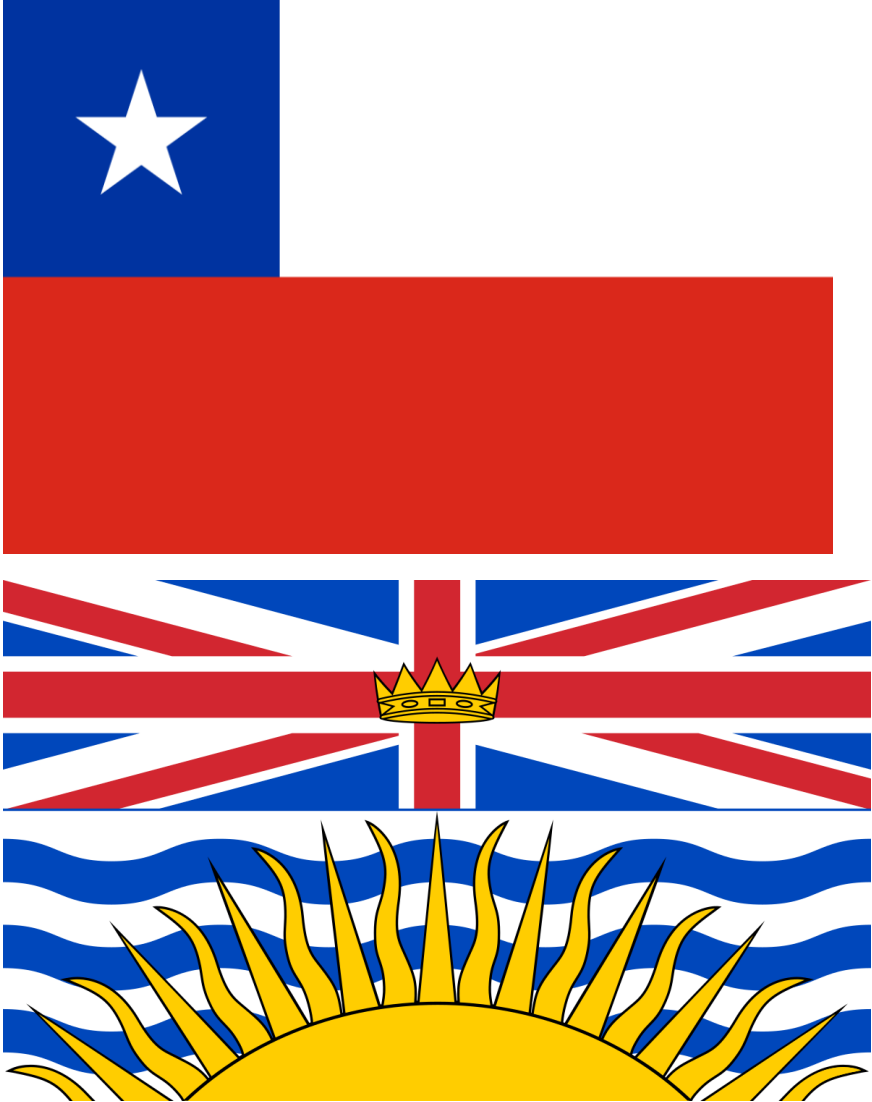
Rabine Porphyry  
Stock Outline



- 2023 Drill collar
- 2022 Drill collar
- Drill trace



# 302 metres of 1.09% Copper Equivalent within 606 metres of 0.74% Copper Eq

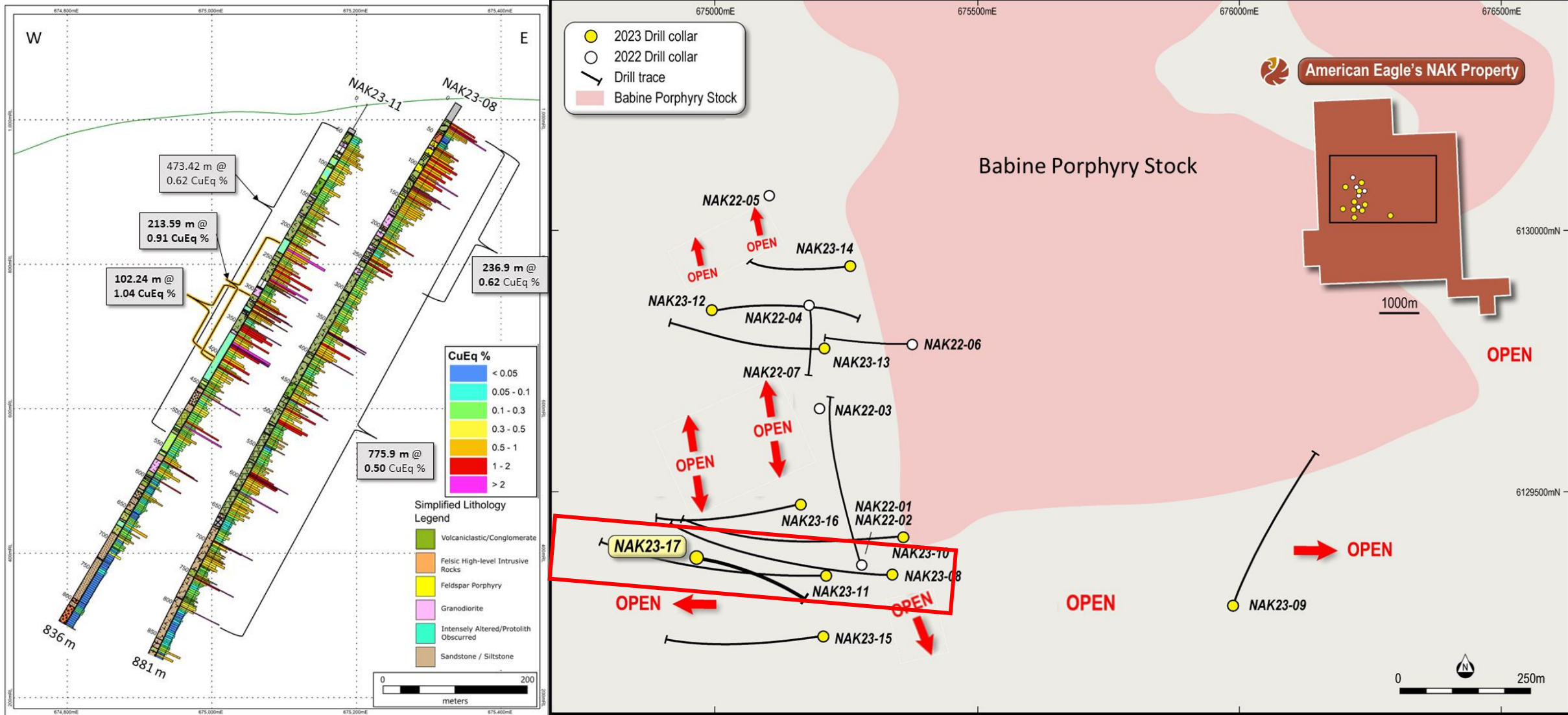




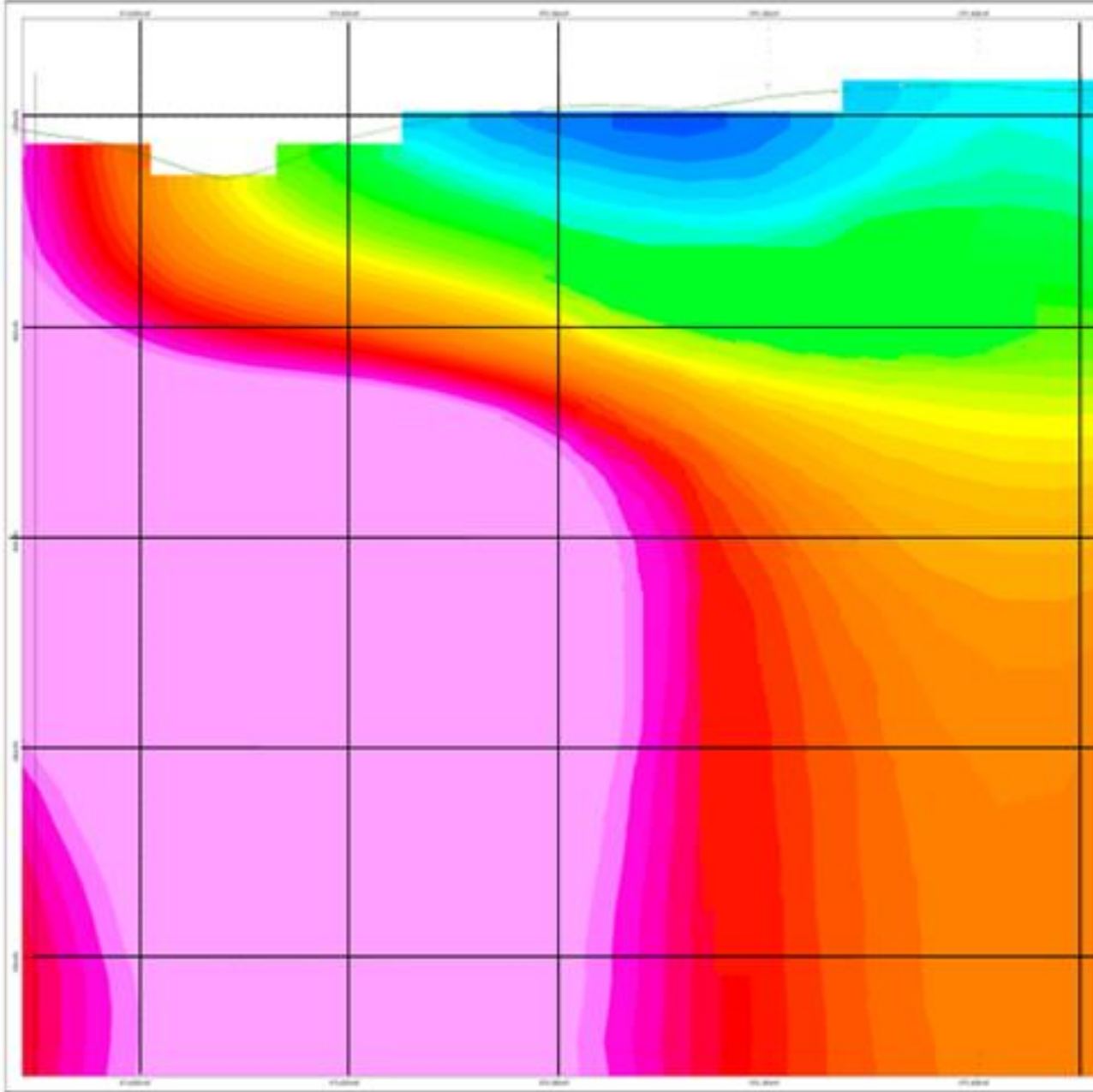
# NAK 2022 & 2023 Drill Program Highlights

<b>302 m of 1.09% CuEq within 606 m of 0.74% CuEq</b>	NAK23-17	<b>776 m of 0.50% CuEq from surface</b>	NAK23-08
390.9 m of 0.34% CuEq within 687.7 m of 0.28% CuEq	NAK23-16	<b>106 m of 0.53% CuEq from surface</b> within 856 m of 0.30% CuEq	NAK22-07
543.4 m of 0.27% CuEq	NAK23-15	330 m of 0.38% CuEq within 900 m of 0.22% CuEq from surface	NAK22-06
<b>131.6 m of 0.59% CuEq</b> within 749 m of 0.30% CuEq	NAK23-14	804 m of 0.20% CuEq from surface	NAK22-05
103 m of 0.54% CuEq within 606 m of 0.23% CuEq	NAK23-13	<b>89 m of 0.98% CuEq within 527 m of 0.45% CuEq</b>	NAK22-04
<b>900 m of 0.50% CuEq</b> from surface including <b>540 m of 0.61% CuEq</b>	NAK23-12	645 m of 0.25% CuEq	NAK22-03
<b>102 m of 1.04% CuEq</b> within <b>214 m of 0.91% CuEq</b> within <b>473 m of 0.62% CuEq</b> from surface	NAK23-11	<b>301 m of 0.61% CuEq</b> from surface within 956 m of 0.37% CuEq	NAK22-02
<b>359 m of 0.43% CuEq</b> within 830 m of 0.36% CuEq from surface	NAK23-10	<b>126 m of 1.05% CuEq</b> from surface within 851 m of 0.37% CuEq	NAK22-01
117 m of 0.40% CuEq from surface within 434 m of 0.25% CuEq	NAK23-09		

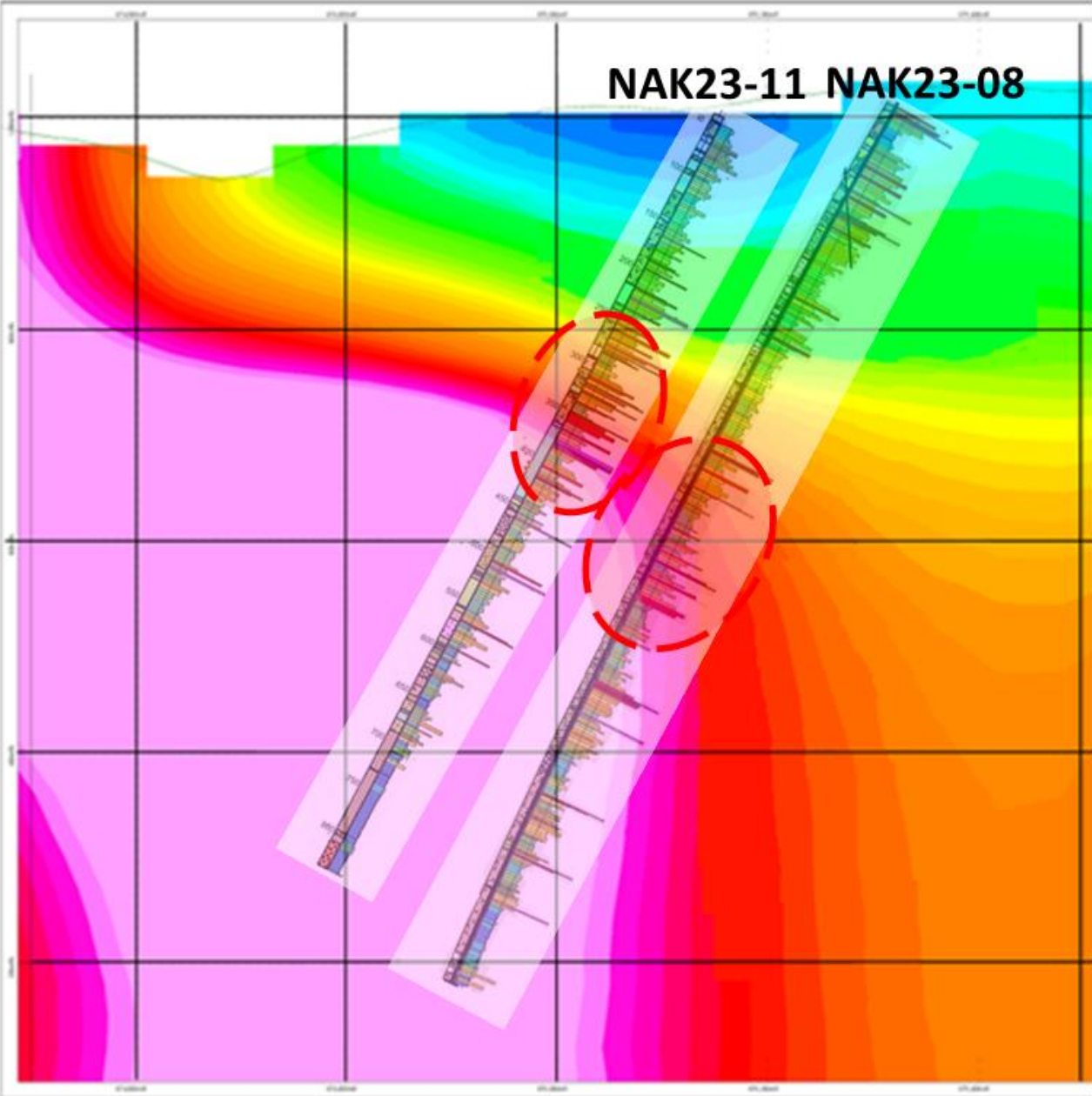
# High Grade in the South



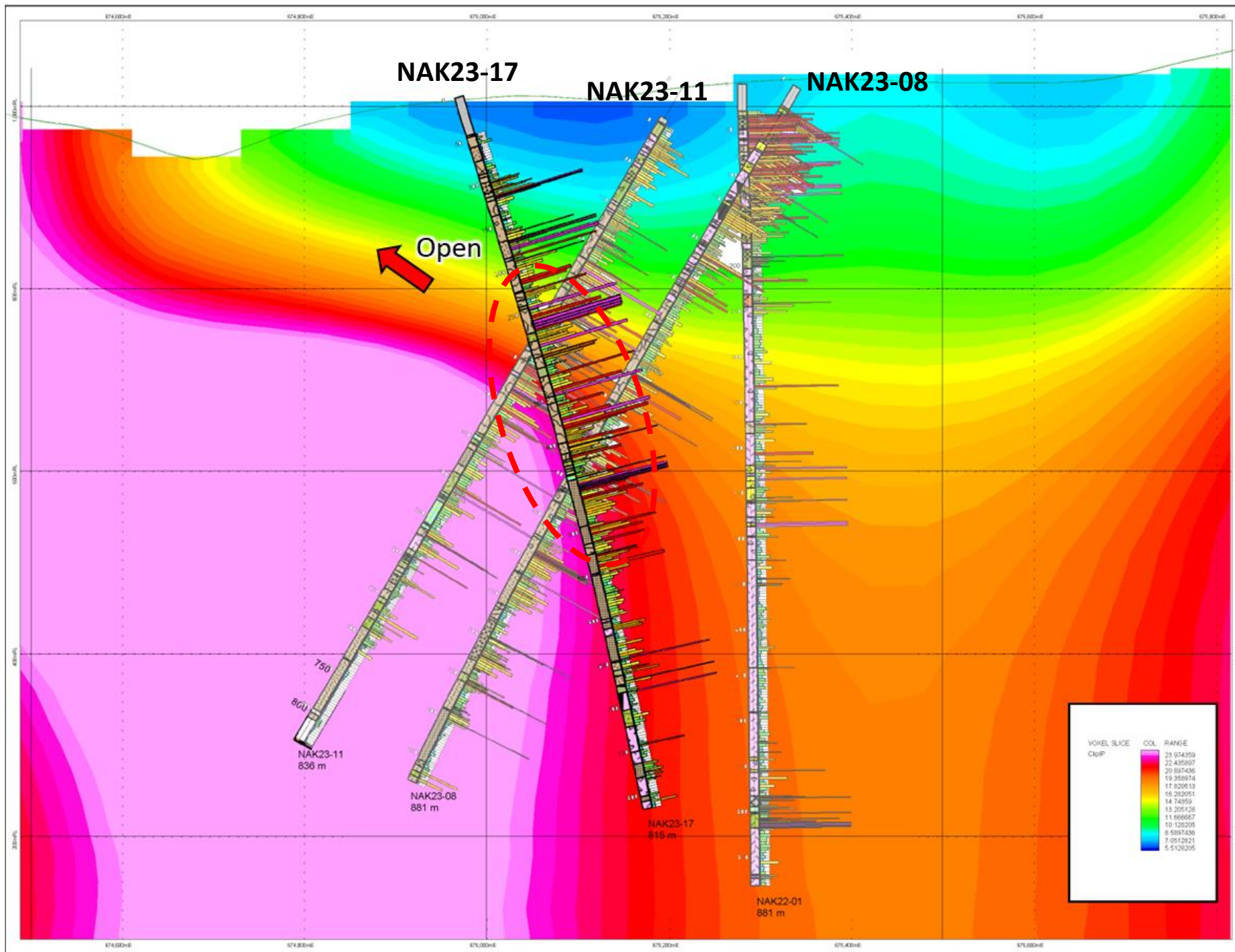
# End of Year IP Study



# End of Year IP Study with Assay Overlays







# Drill Hole 01

**125m 1.05% CuEq**

1.01 Au g/t

0.29 Cu%

1.45 Ag g/t

-- Mo ppm

**221m 0.68% CuEq**

0.65 Au g/t

0.21 Cu%

1.01 Ag g/t

-- Mo ppm

**851m 0.37% CuEq**

0.22 Au g/t

0.17 Cu%

0.97 Ag g/t

-- Mo ppm

**64m 0.78% CuEq**

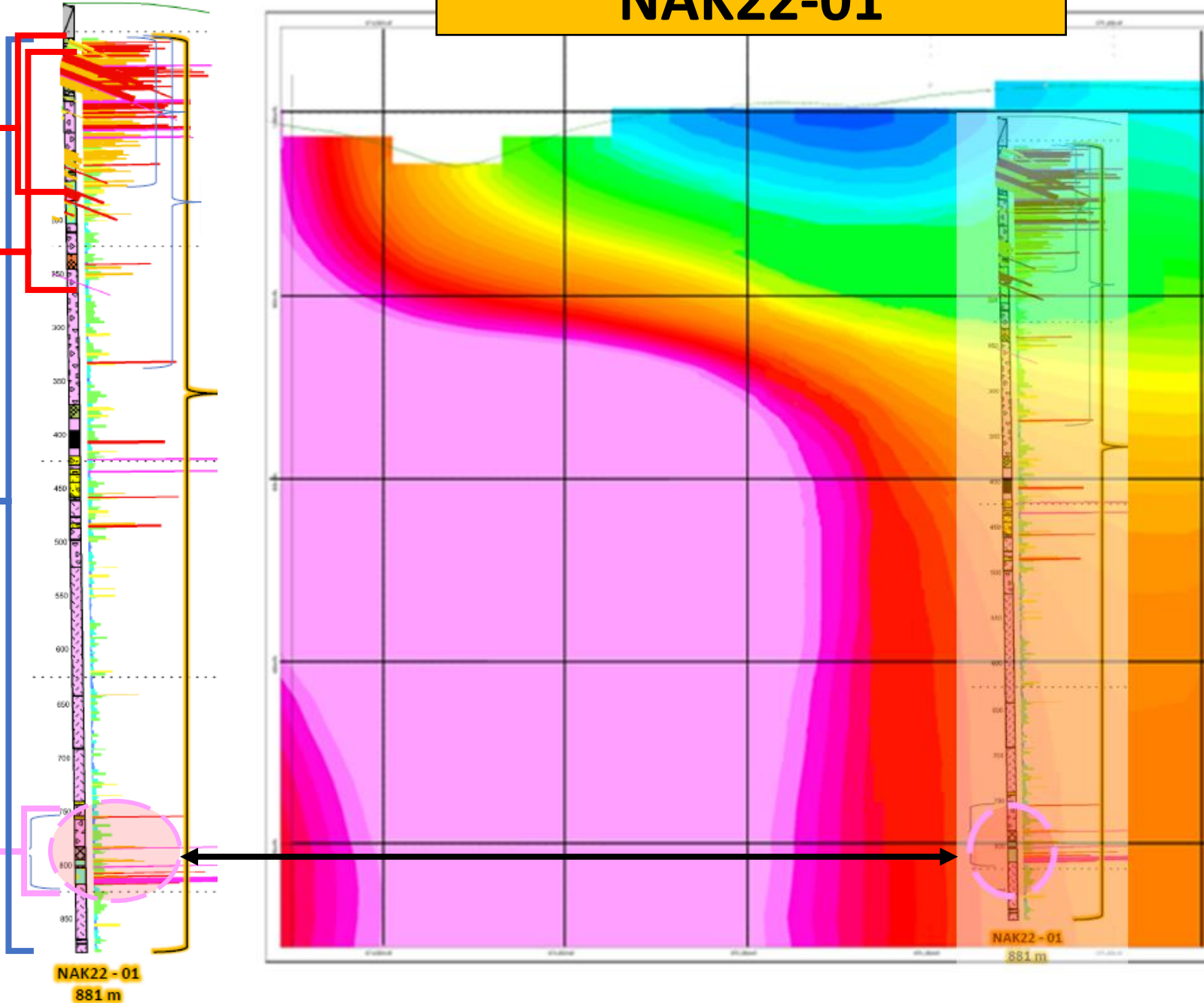
0.15 Au g/t

**0.58 Cu%**

6.78 Ag g/t

-- Mo ppm

# NAK22-01





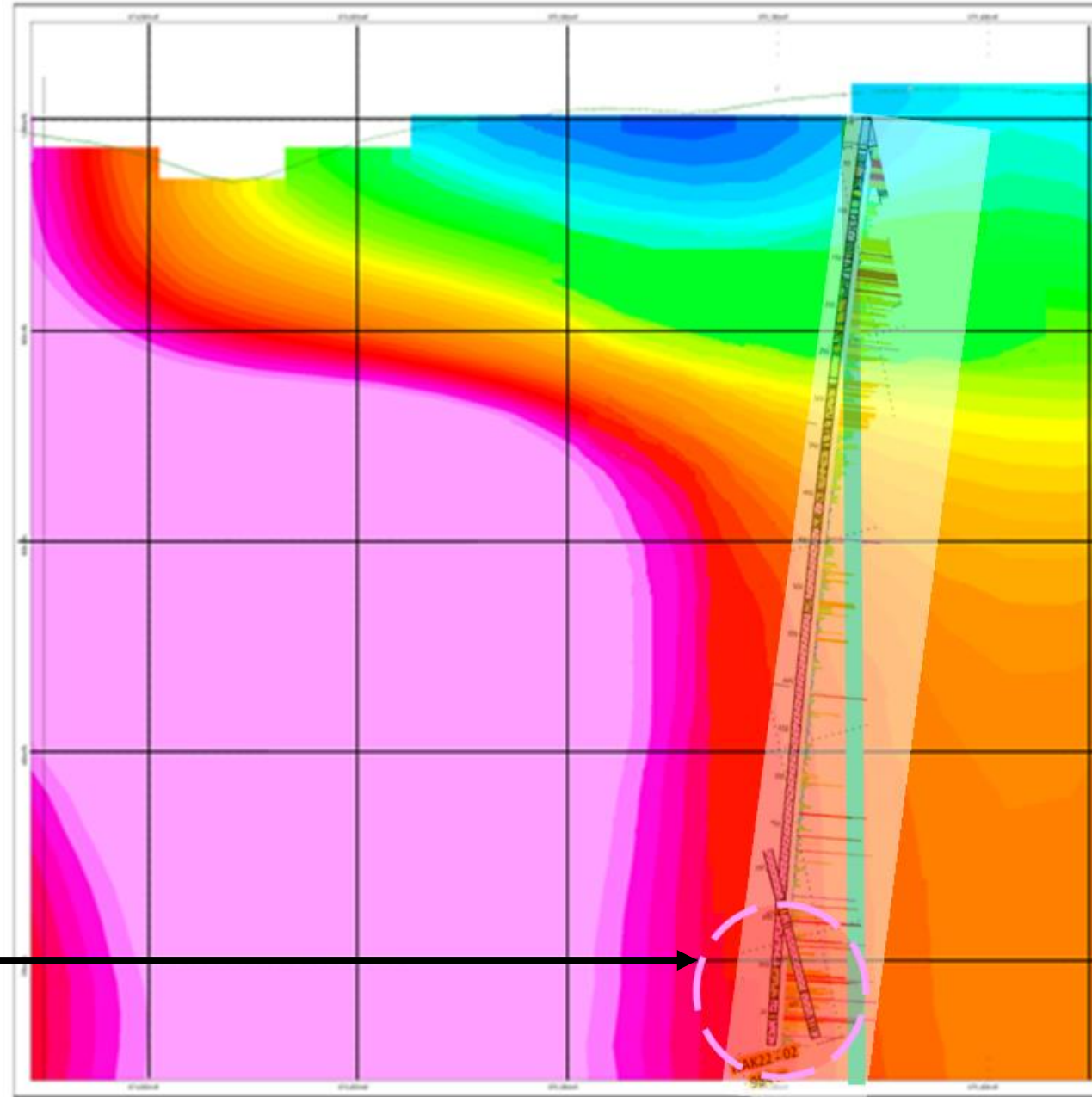
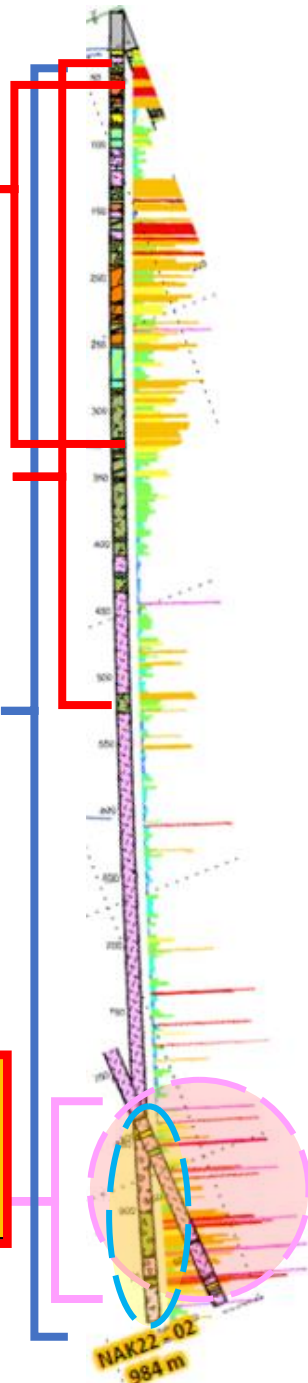
# NAK22-02

**301m 0.61% CuEq**  
0.50 Au g/t  
0.22 Cu%  
1.13 Ag g/t  
45.1 Mo ppm

**574m 0.40% CuEq**  
0.29 Au g/t  
0.17 Cu%  
0.89 Ag g/t  
0.31 Mo ppm

**956m 0.37% CuEq**  
0.19 Au g/t  
0.20 Cu%  
1.30 Ag g/t  
37.7 Mo ppm

**150m 0.60% CuEq**  
0.11 Au g/t  
0.44 Cu%  
3.72 Ag g/t  
82.2 Mo ppm

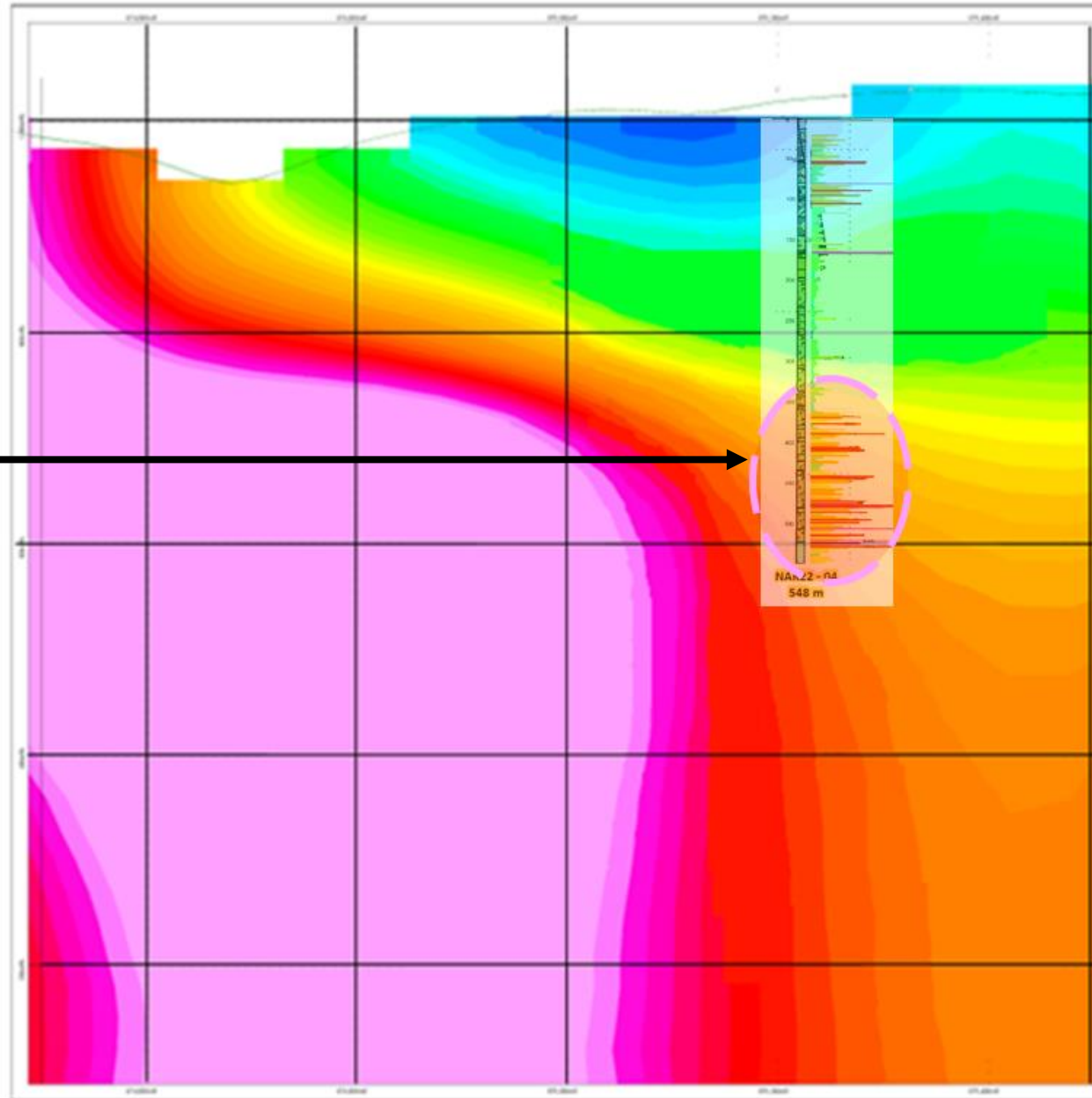
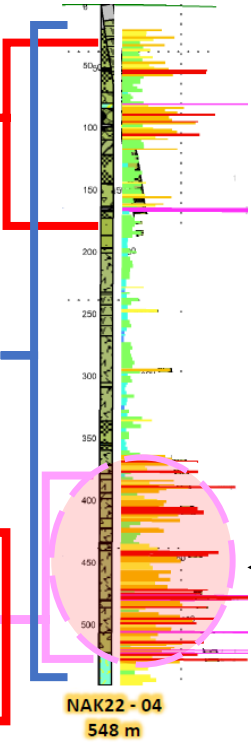


# NAK22-04

**146m 0.51% CuEq**  
0.07 Au g/t  
**0.44 Cu%**  
1.4 Ag g/t  
27 Mo ppm

**527m 0.45% CuEq**  
0.11 Au g/t  
0.32 Cu%  
1.55 Ag g/t  
63 Mo ppm

**185m 0.74% CuEq**  
**0.23 Au g/t**  
**0.49 Cu%**  
2.8 Ag g/t  
91 Mo ppm



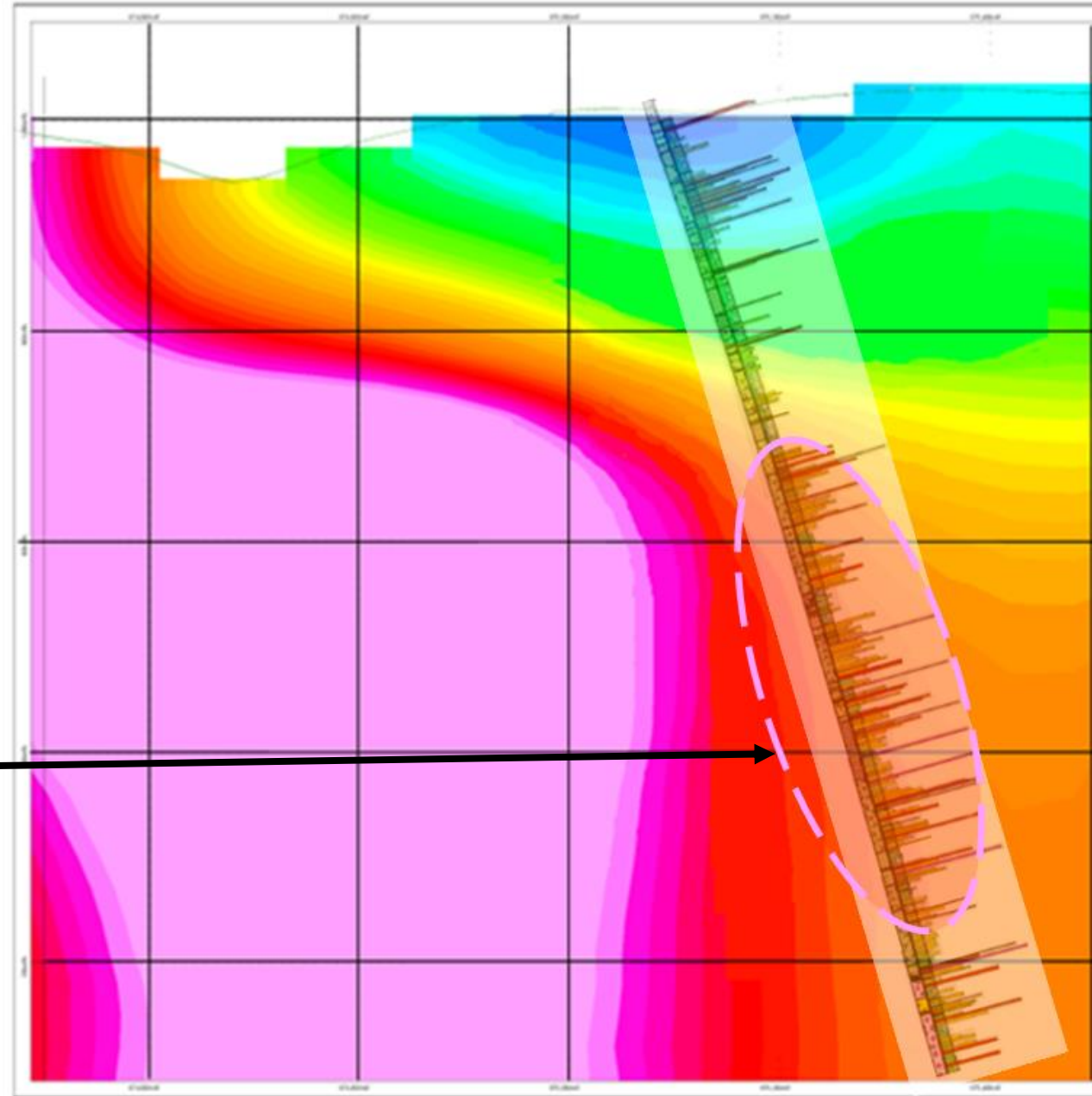


# NAK23-12

**50m 0.88% CuEq**  
0.04 Au g/t  
**0.79 Cu%**  
4.8 Ag g/t  
14 Mo ppm

**900m 0.50% CuEq**  
0.11 Au g/t  
0.35 Cu%  
2.4 Ag g/t  
60 Mo ppm

**540m 0.61% CuEq**  
0.16 Au g/t  
**0.41 Cu%**  
2.7 Ag g/t  
**82 Mo ppm**



# NAK23-13

## 120m 0.30% CuEq

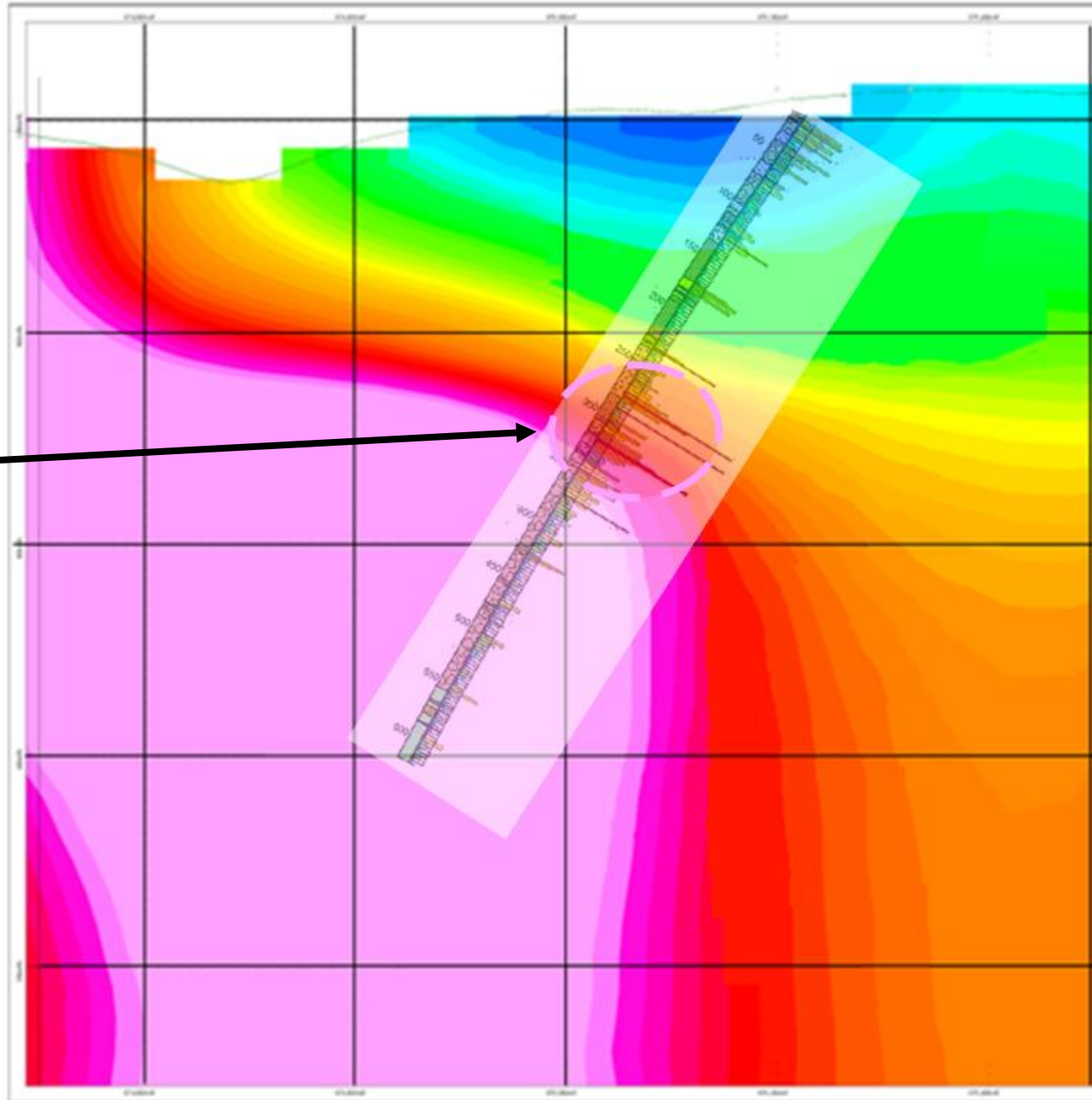
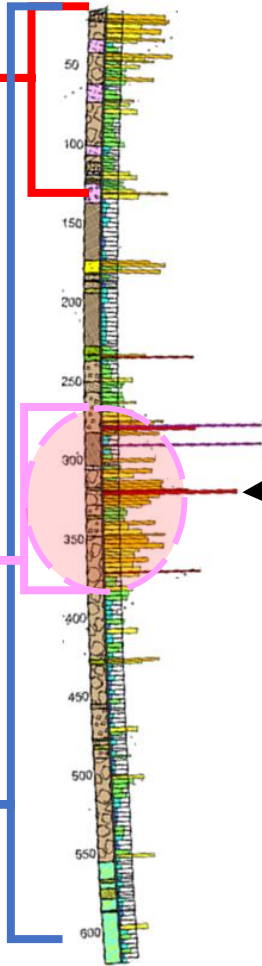
0.07 Au g/t  
0.22 Cu%  
0.93 Ag g/t  
38.1 Mo ppm

## 103m 0.54% CuEq

0.05 Au g/t  
0.40 Cu%  
1.53 Ag g/t  
130 Mo ppm

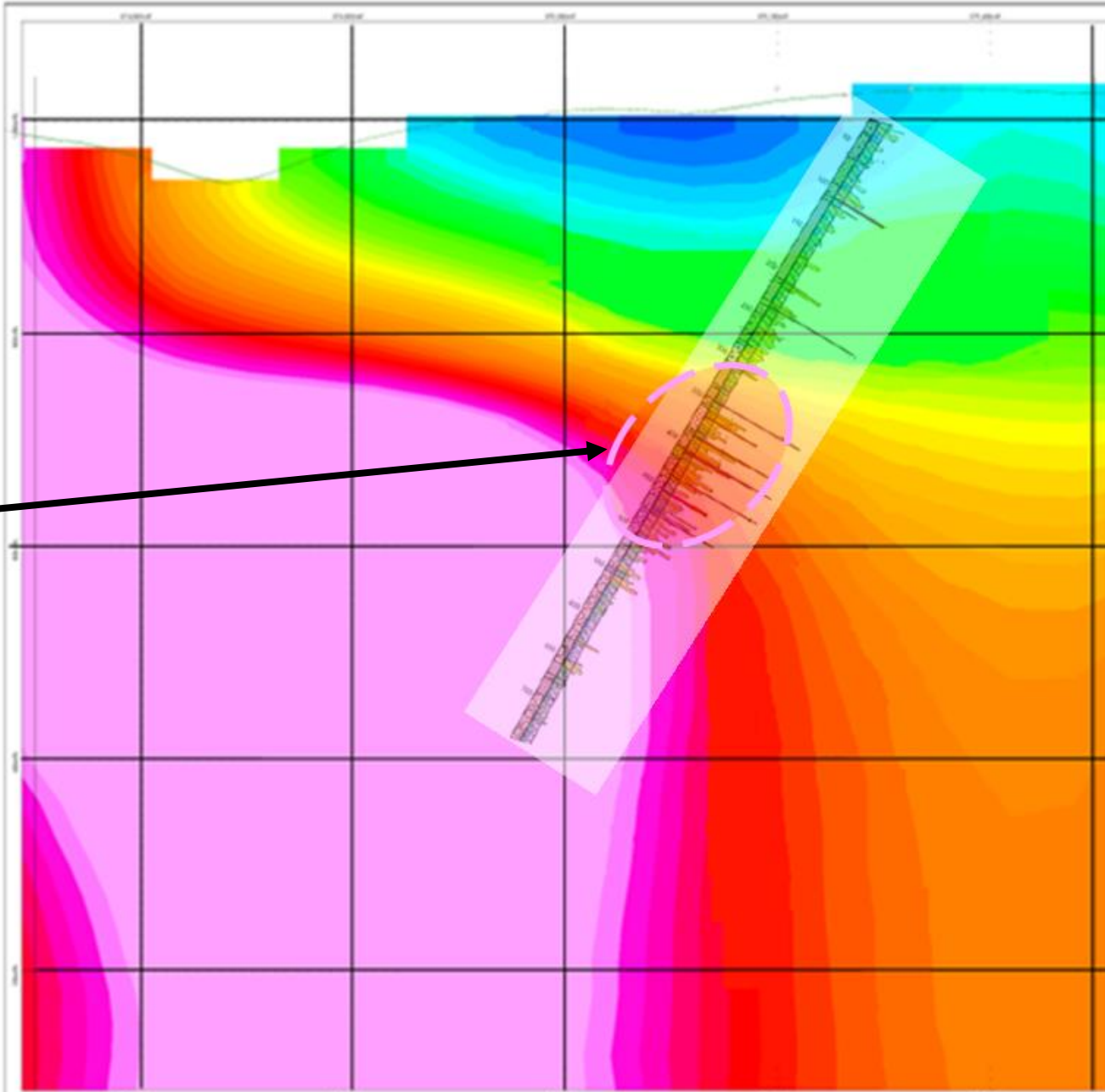
## 606m 0.23% CuEq

0.04 Au g/t  
0.16 Cu%  
0.72 Ag g/t  
44.2 Mo ppm





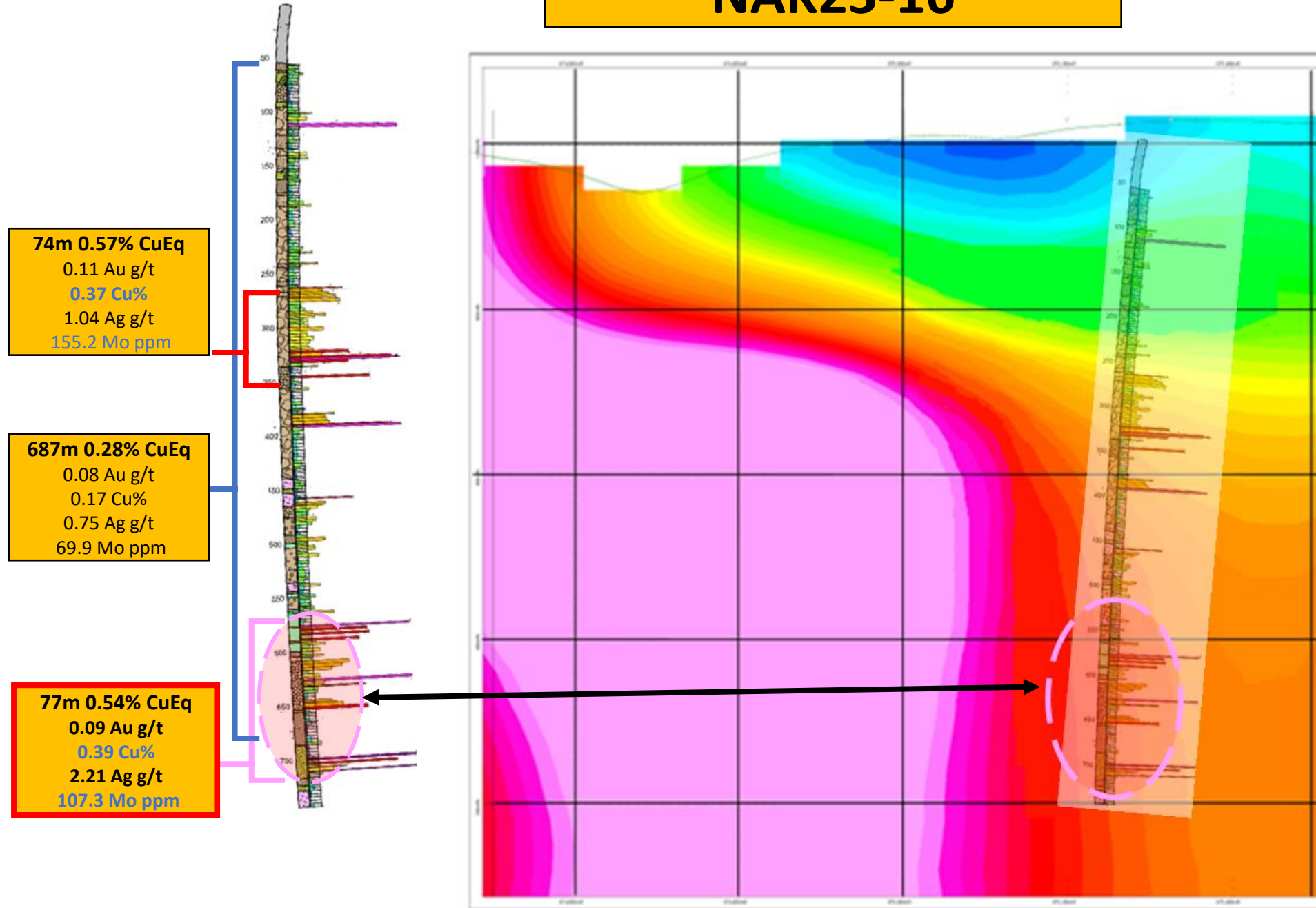
# NAK23-14



**729m 0.30% CuEq**  
0.06 Au g/t  
0.21 Cu%  
1.12 Ag g/t  
53 Mo ppm

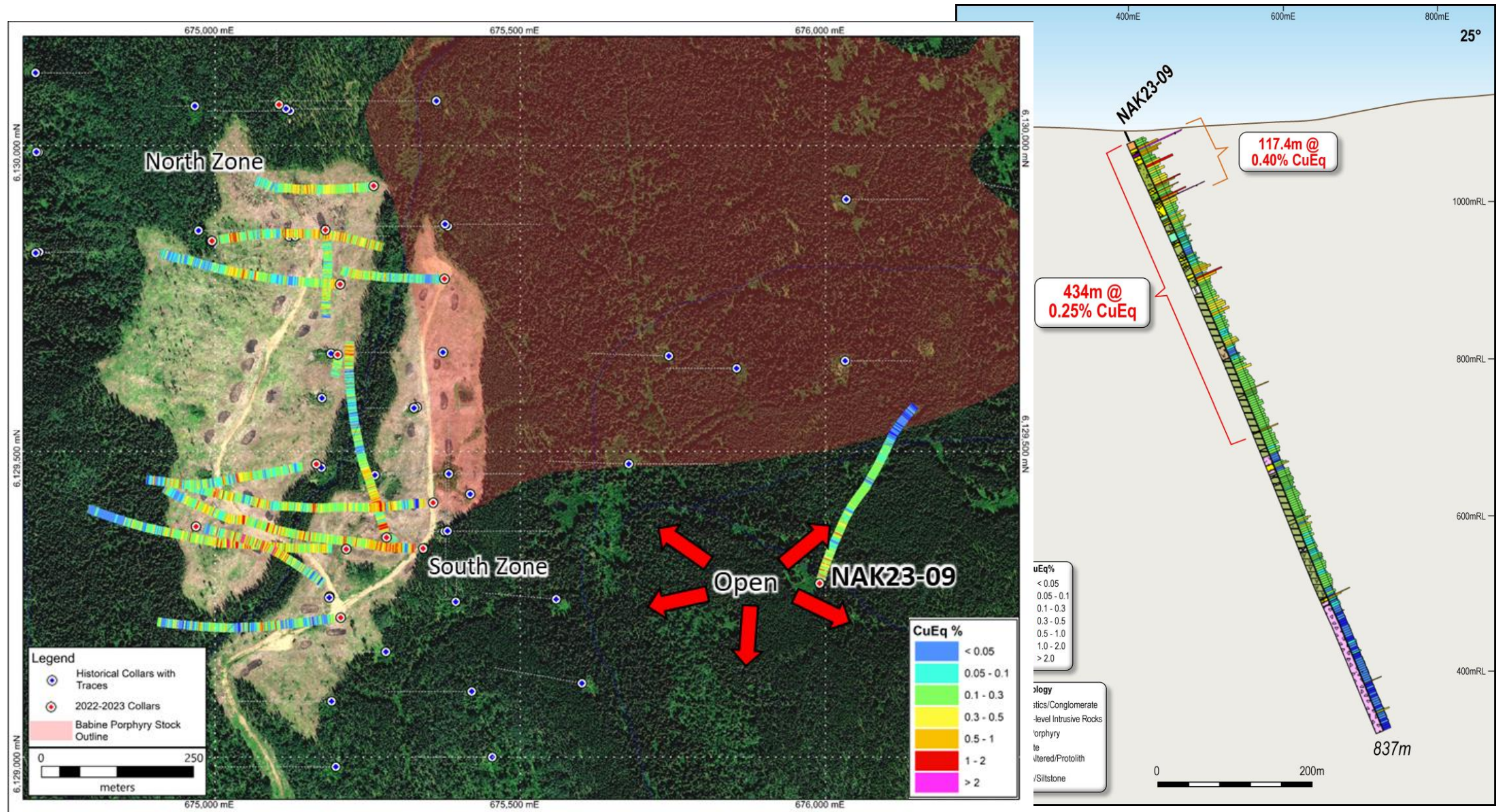
**212m 0.51% CuEq**  
0.09 Au g/t  
**0.35 Cu%**  
2.14 Ag g/t  
**99 Mo ppm**

# NAK23-16





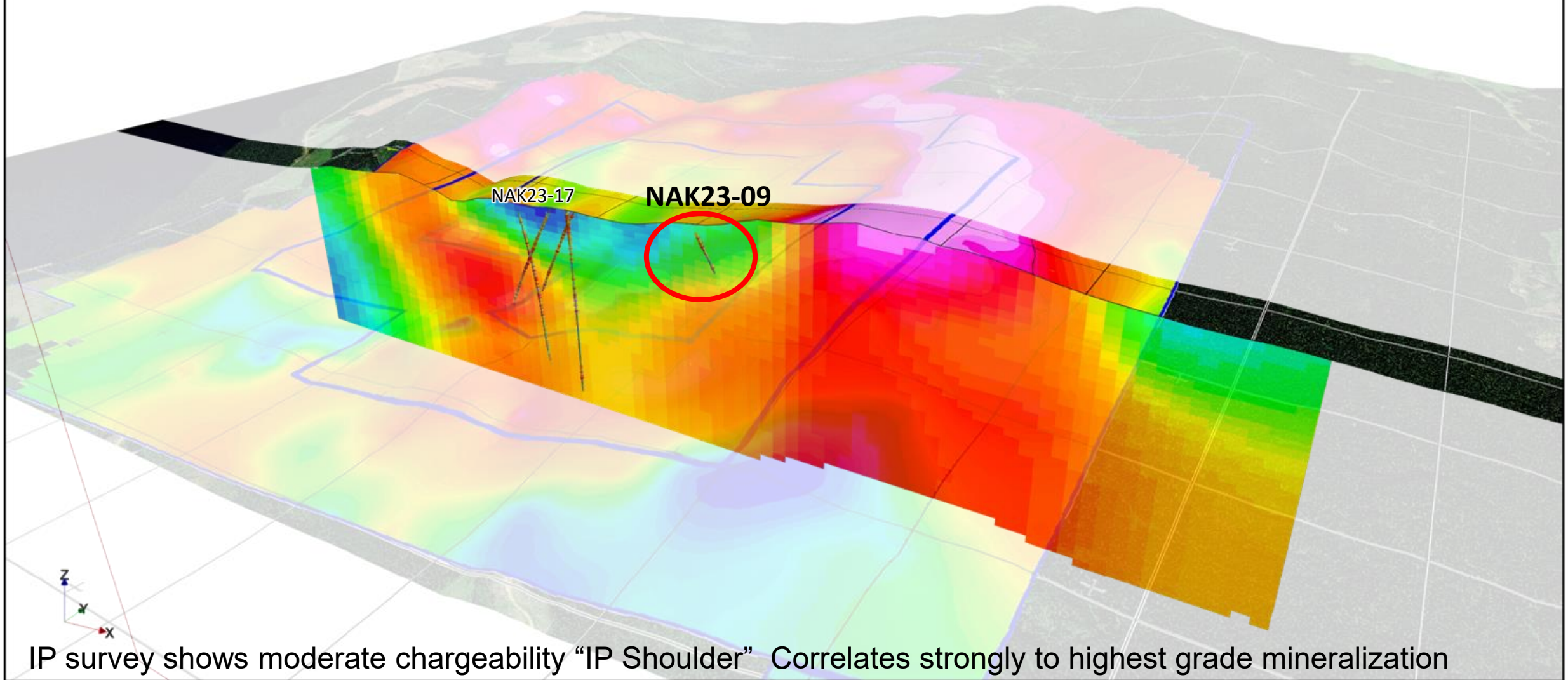
# Discovery of a New Zone at NAK





3D Map

2023 Late-season Inversion Model  
South zone 3D cross section

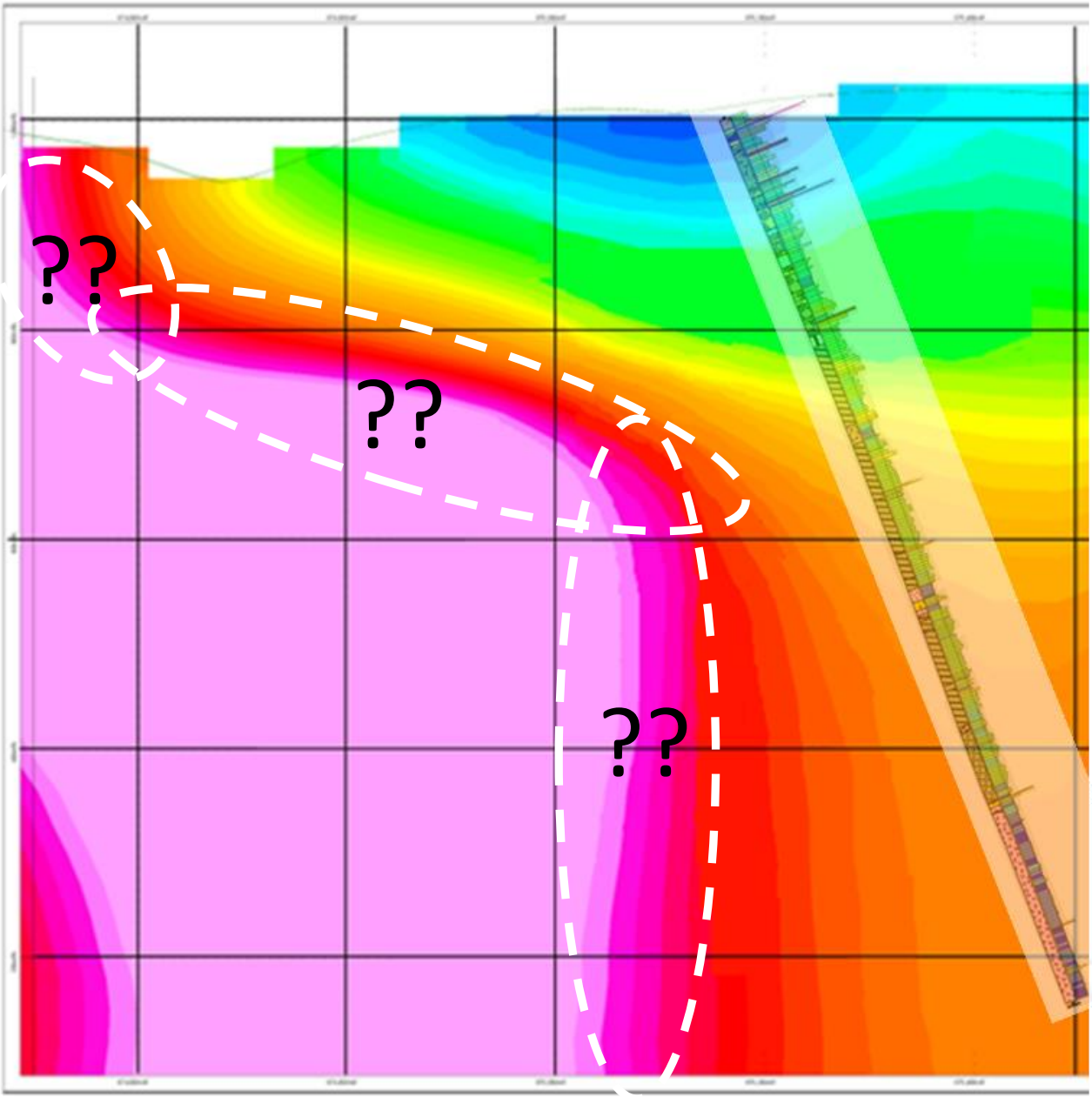
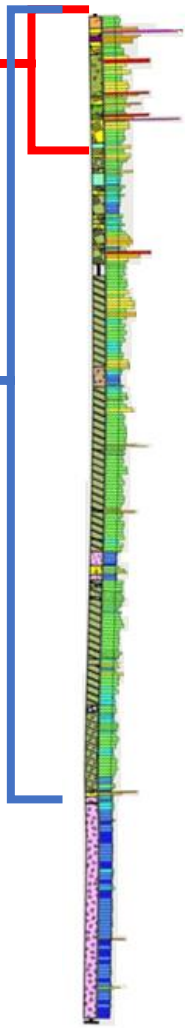




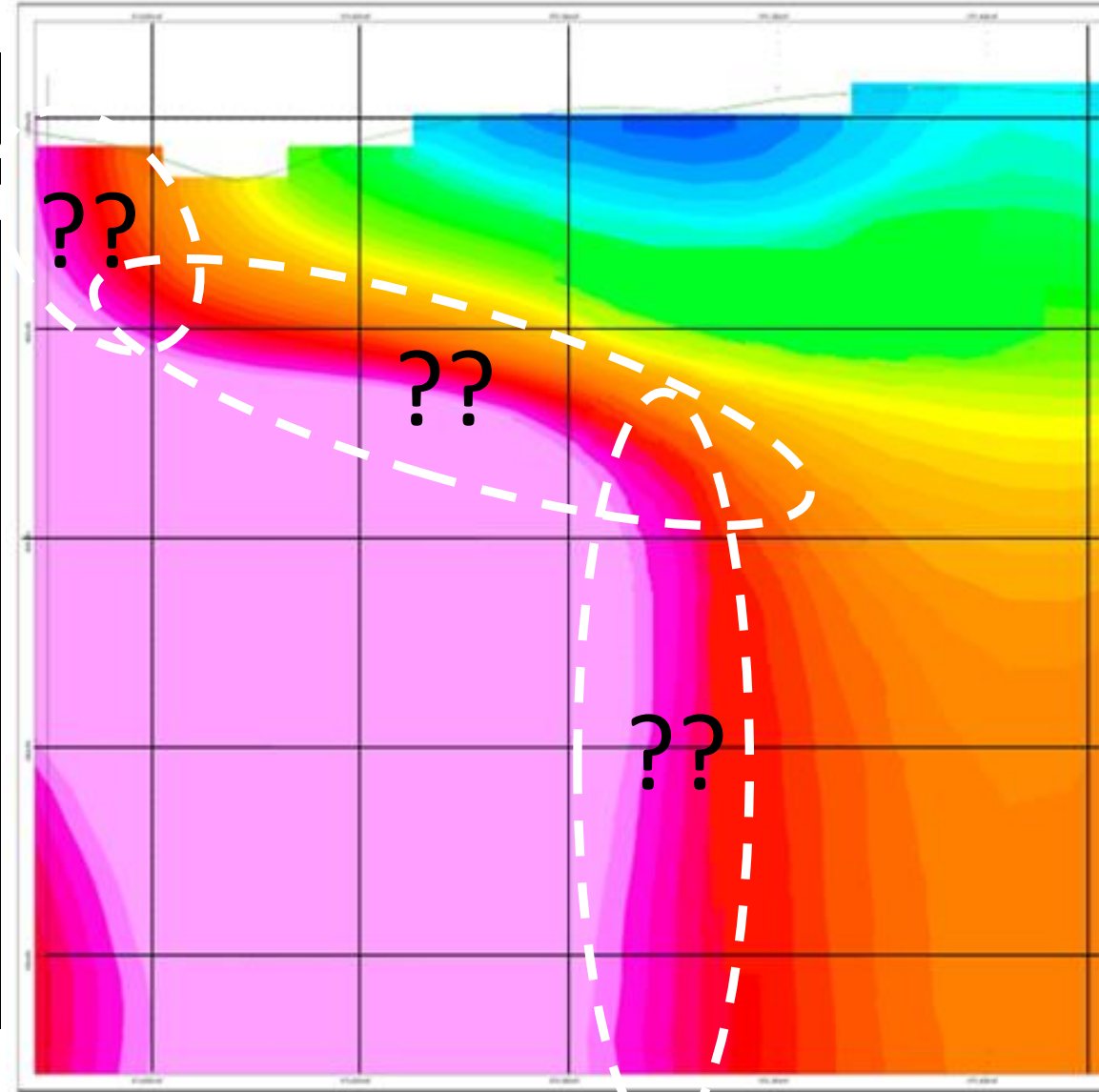
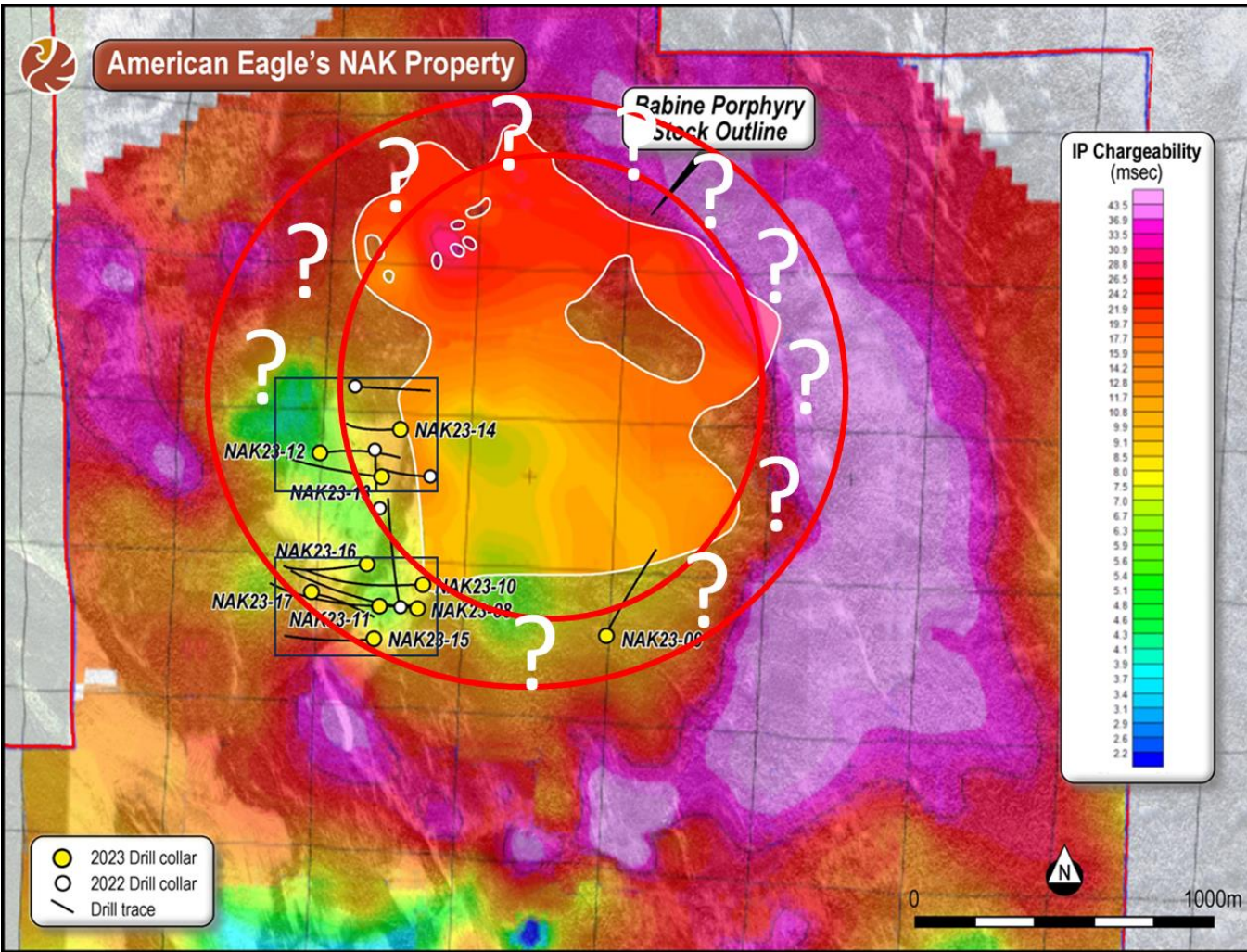
# NAK23-09

**117m 0.40% CuEq**  
0.27 Au g/t  
0.088 Cu%  
0.47 Ag g/t  
159 Mo ppm

**638m 0.22% CuEq**  
0.13 Au g/t  
0.087 Cu%  
0.44 Ag g/t  
44 Mo ppm

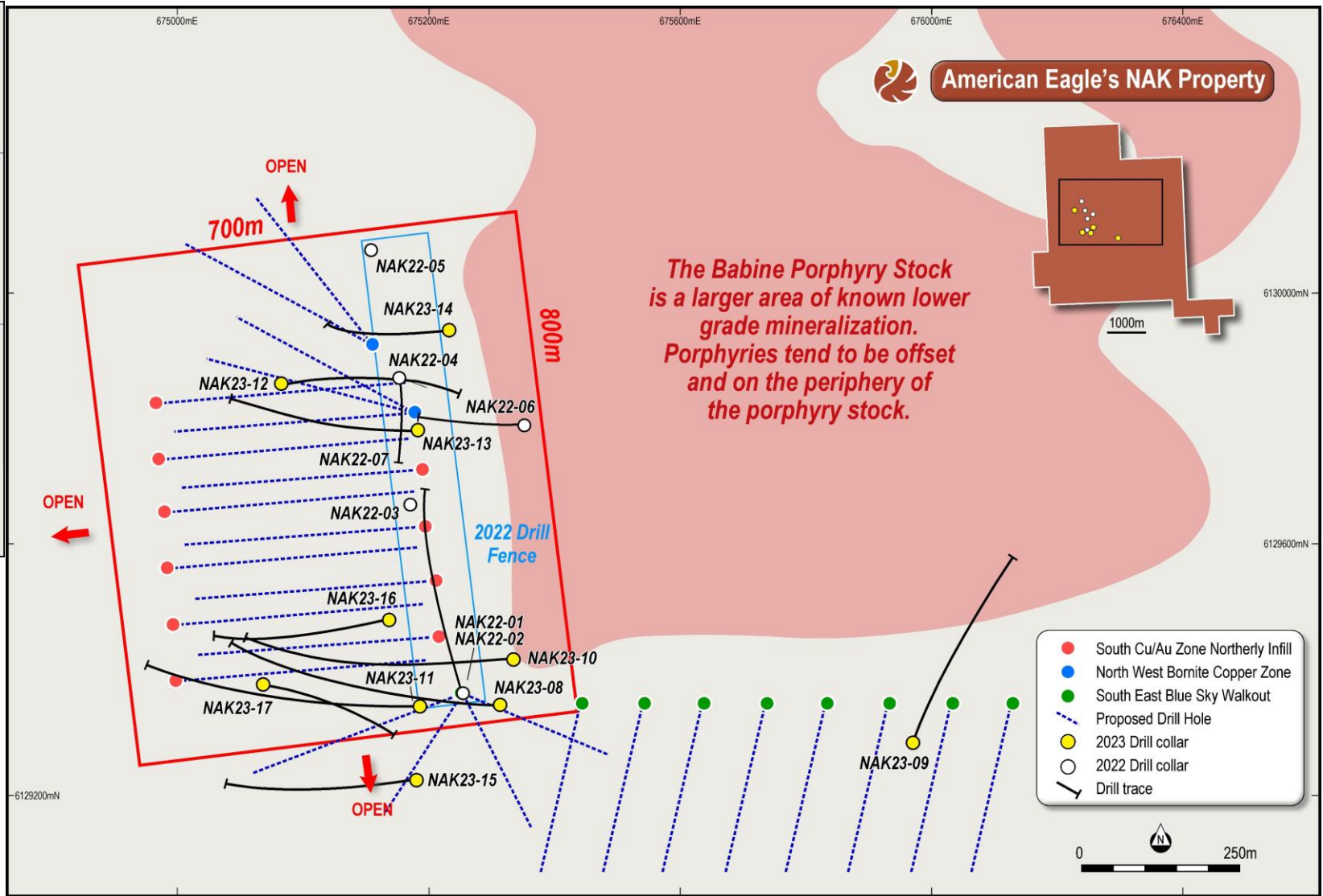
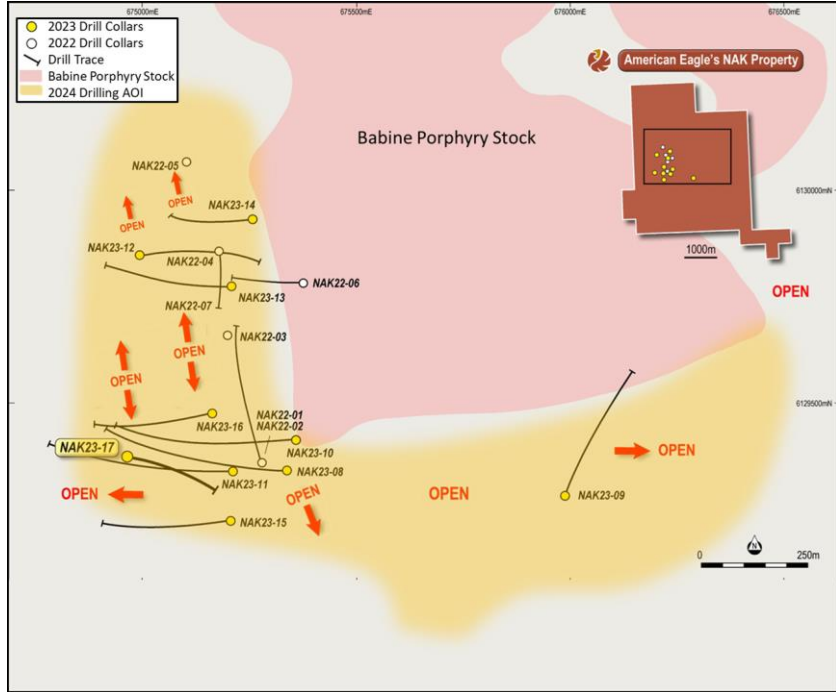


# Proving a Theis

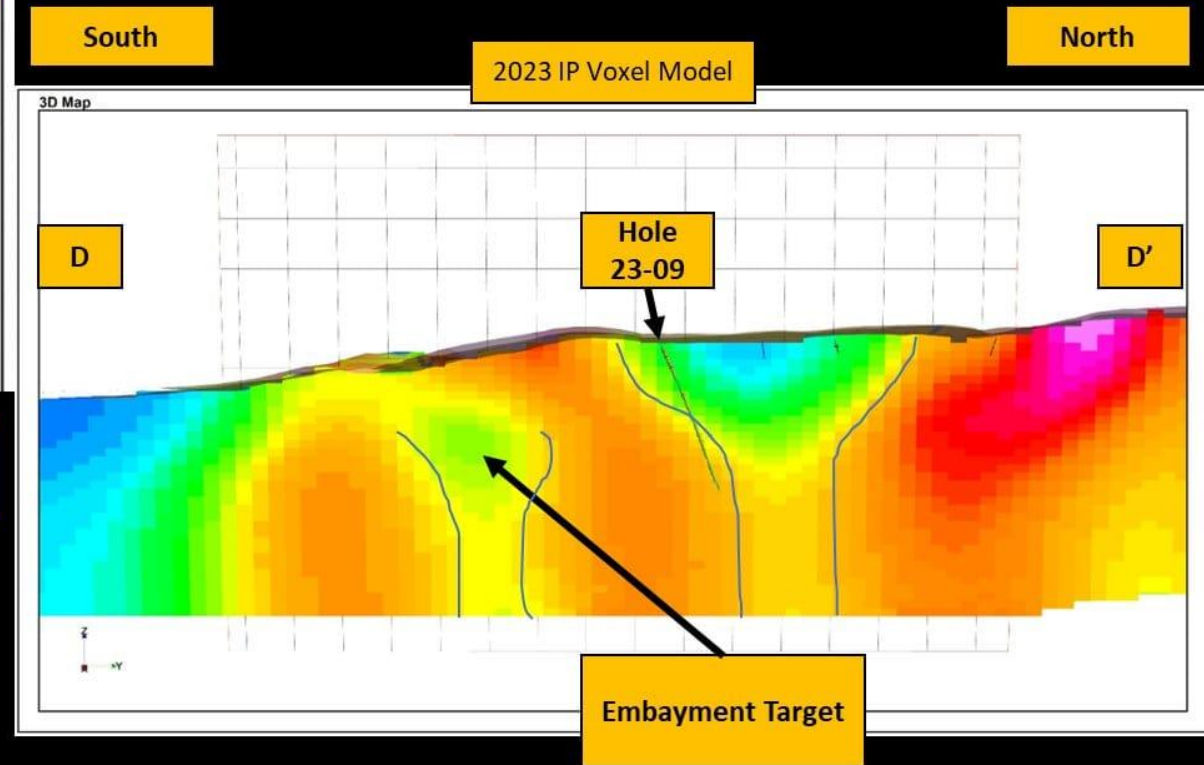
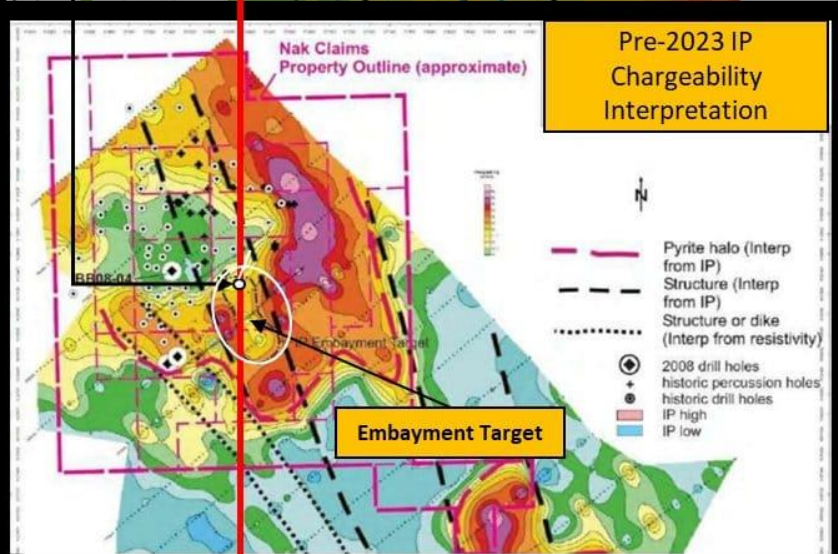
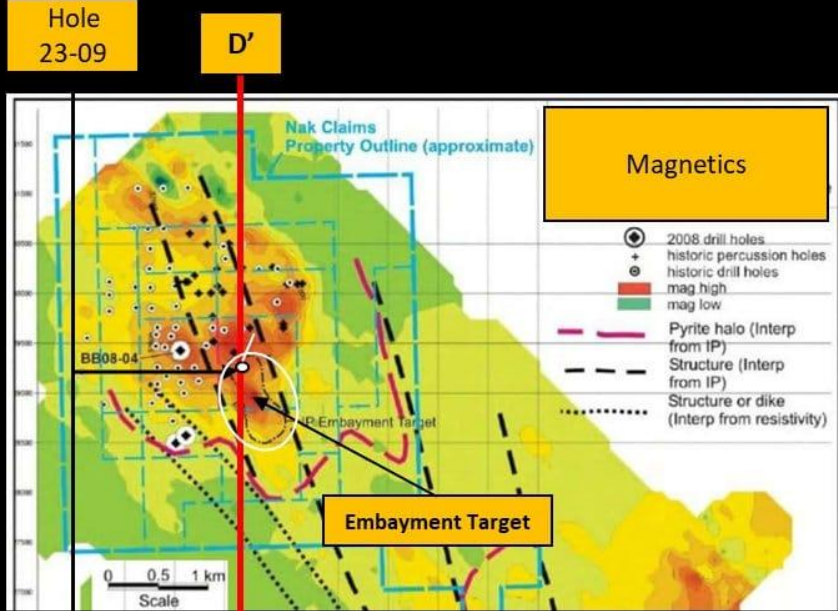




# 2024 Drill Program



# IP Embayment Target





# Corporate Overview

## KEY METRICS

TSXV - OTCQB	AE - AMEGF
Shares Outstanding (m)	119
Warrants and Options (m)	19.8
Share Price (03/11/2024)	\$0.60
Market Cap	~\$70
Cash	\$5.5M
Insiders and Funds	46%
Teck Resources (TECK: TSX)	19.99%

## BOARD & MANAGEMENT

Anthony Moreau	CEO & Director
Stephen Stewart	Chairman
Joel Friedman	CFO
Alex Stewart	Director
Kurt Breede	Director
Michael Mansfield	Director

AE: TSXV | AMEGF: OTCQB

## SHARE PRICE



Part of the  OREGROUP

# Strategic Partnership with Teck Resources

- Teck Resources made three investments into American Eagle, each done at a significant premium to market:
  - May 2023 ([click here to view NR](#))
  - August 2023 ([click here to view NR](#))
  - November 2023 ([click here to view NR](#))
- Teck Resources owns 19.9% of American Eagle
- Investment provides for a fully funded 2024 drill program
- Partnership with Teck lends credibility and brings attention to NAK and American Eagle

# Teck



# CATALYSTS

- 2024 Drill Plan: April
- IP Survey: April
- Warrants Due: May 3rd
- Drilling Begins: May
- Assays, Assays and more Assays: June → 2025