



**AMERICAN EAGLE**

# **AMERICAN EAGLE GOLD**

**DEVELOPING CANADA'S NEXT MAJOR PORPHYRY**

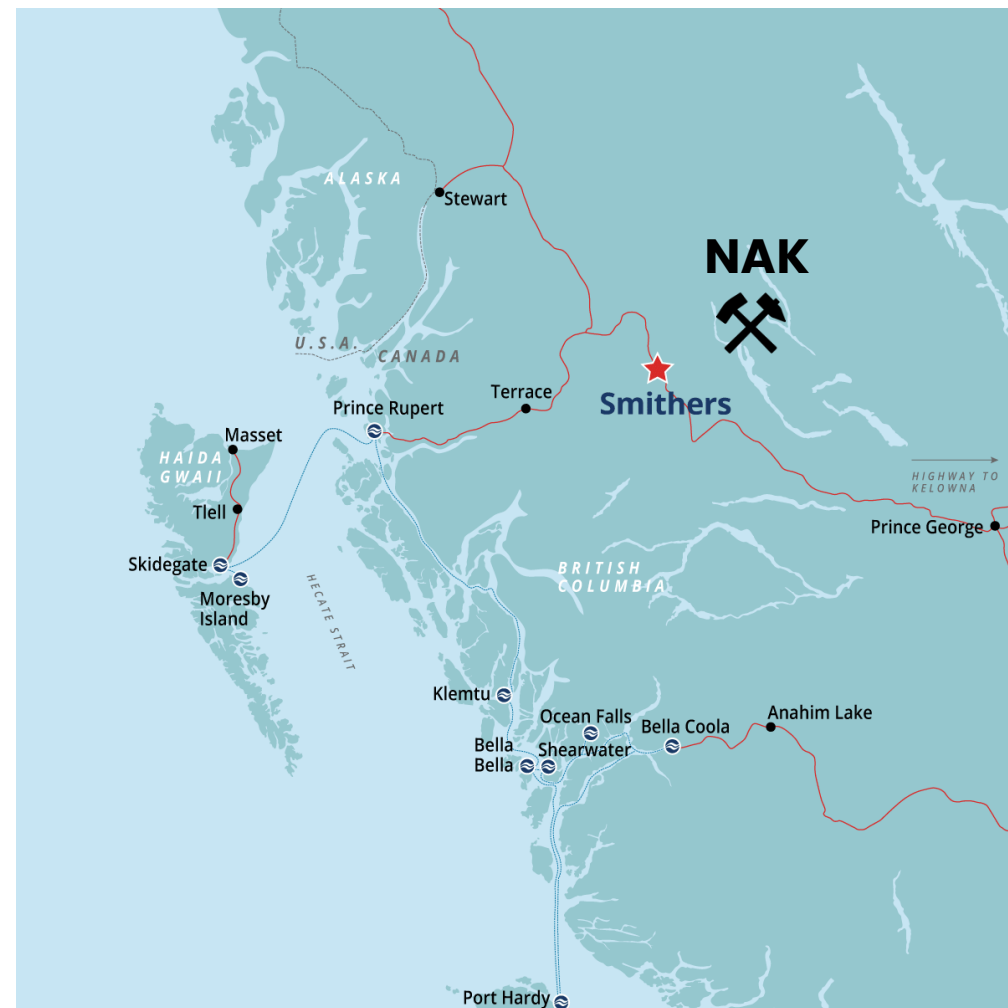
**Q1 2025**

**AE: TSXV | AMEGF: OTCQB**  
**AmericanEagleGold.ca**

*Background: NAK Exploration Camp*

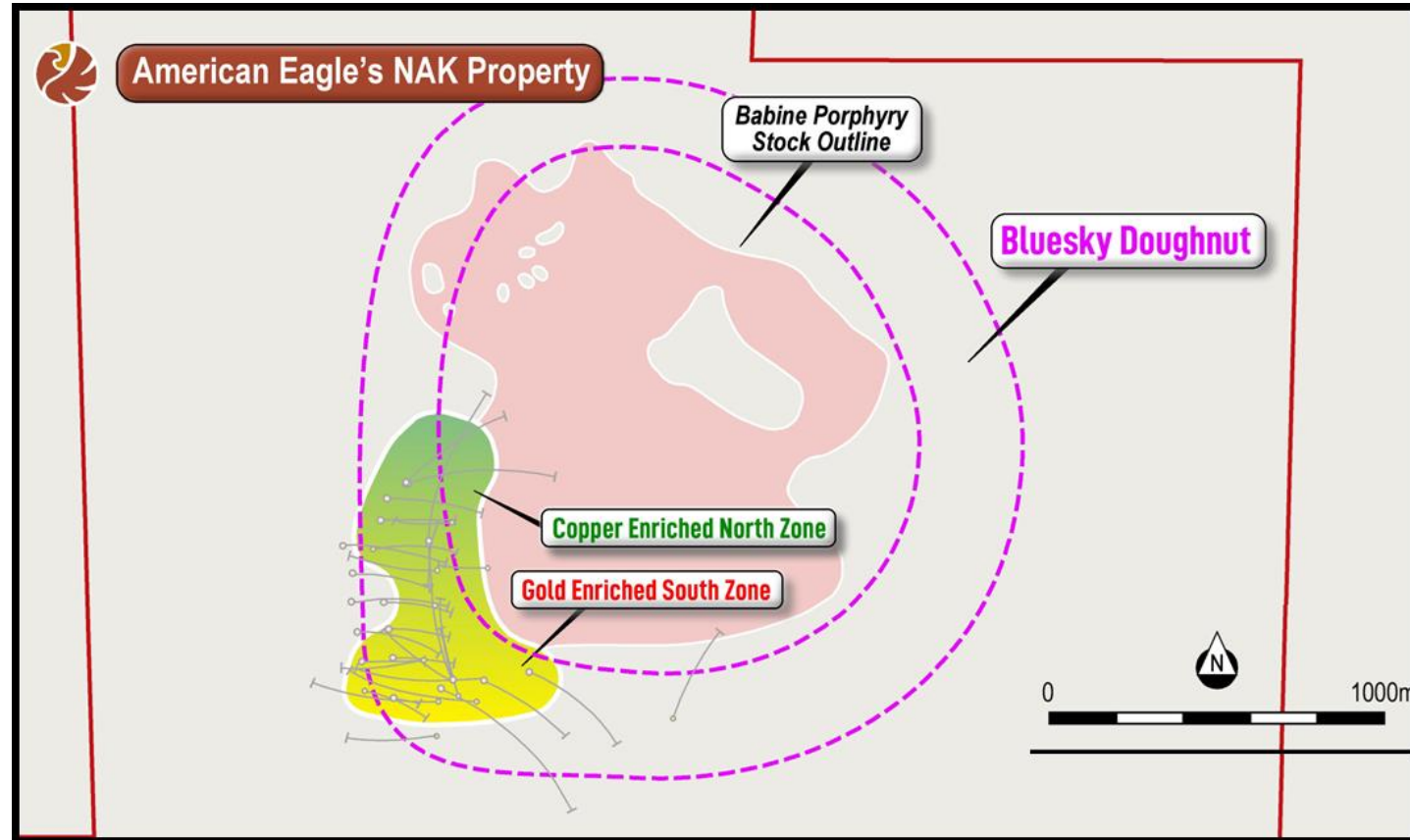
## NAK: CANADA'S NEXT MAJOR PORPHYRY DEPOSIT

- ▶ NAK stands out among Canadian copper-gold porphyries with its **scale, near-surface high-grades**, accessibility, favorable topography, and growth potential.
- ▶ > **\$37 million in cash** with two Major Mining Companies as strategic equity partners – **South32 & Teck Resources**
- ▶ Potential to develop a **multi-billion-tonne copper-gold porphyry deposit**.
- ▶ 85km from Smithers, BC and easily accessible via well-maintained road.
- ▶ Favourable topography + significant infrastructure in place leading to low-cost exploration.
- ▶ **Fully funded** 2025, 2026 & 2027 Drill Program. Backed by **South32 & Teck Resources** Investments.

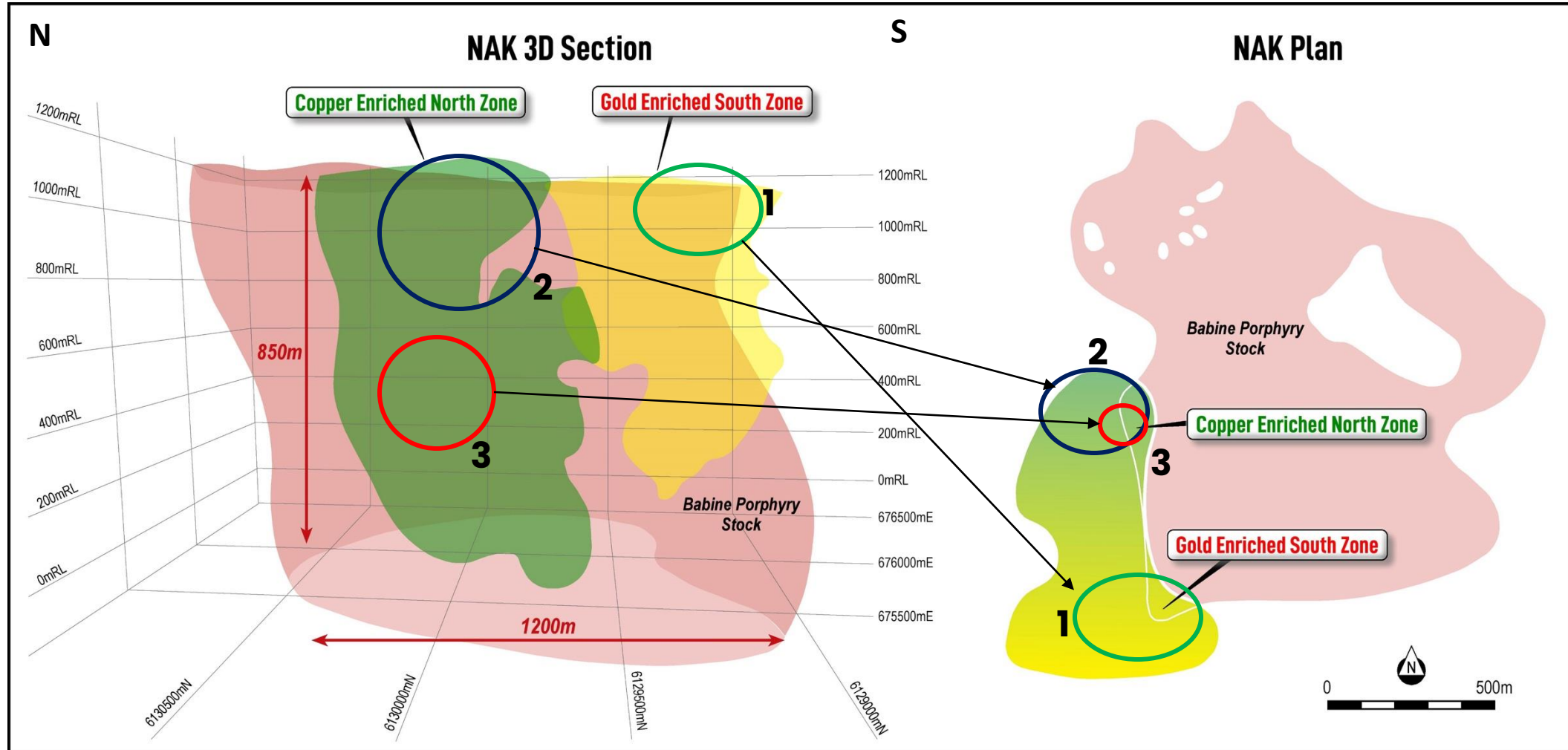


## VISION FOR NAK'S GEOLOGICAL POTENTIAL

- ▶ Multiple zones of near-surface mineralization with long and high-grade drill intercepts.
  - Copper Enriched North Zone
  - Gold Enriched South Zone
- ▶ 360° mineralization surrounding the Babine Porphyry Stock – “Bluesky Doughnut”.
- ▶ Only 20% of targets have been drilled with current mineralized dimensions of 1.2km length x 350m width x 850m deep.



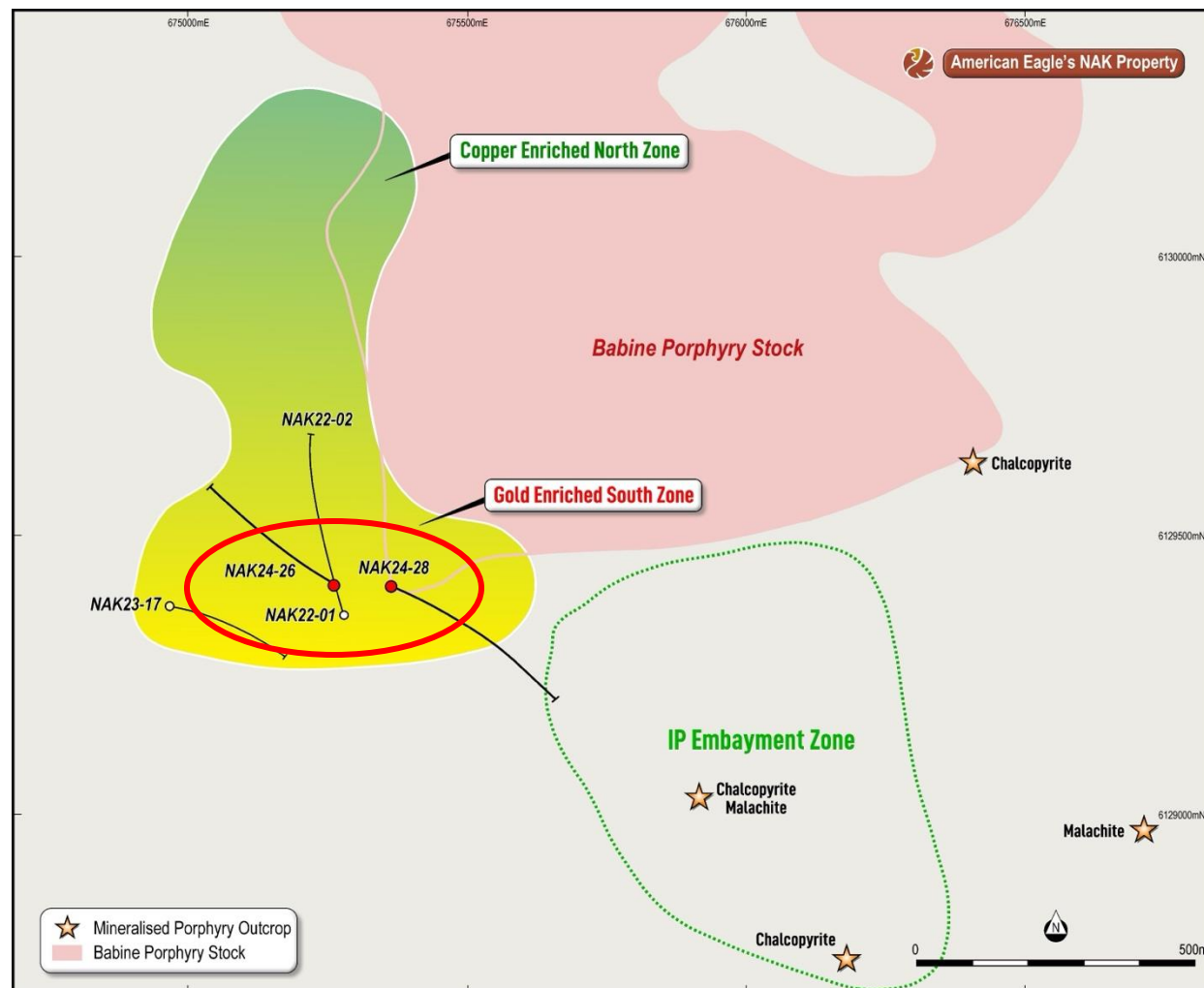
# VISUALIZING THE DEFINED ZONES



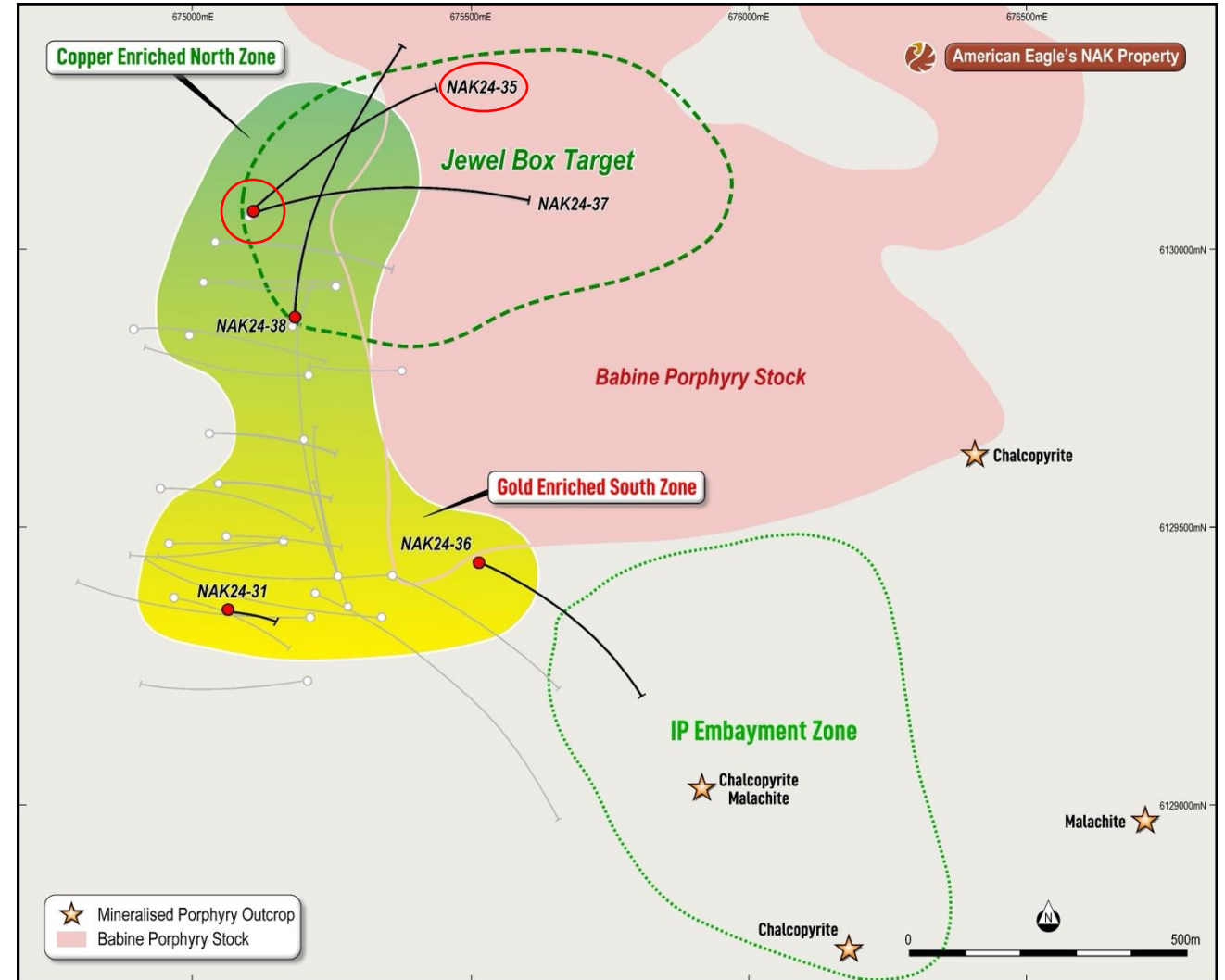
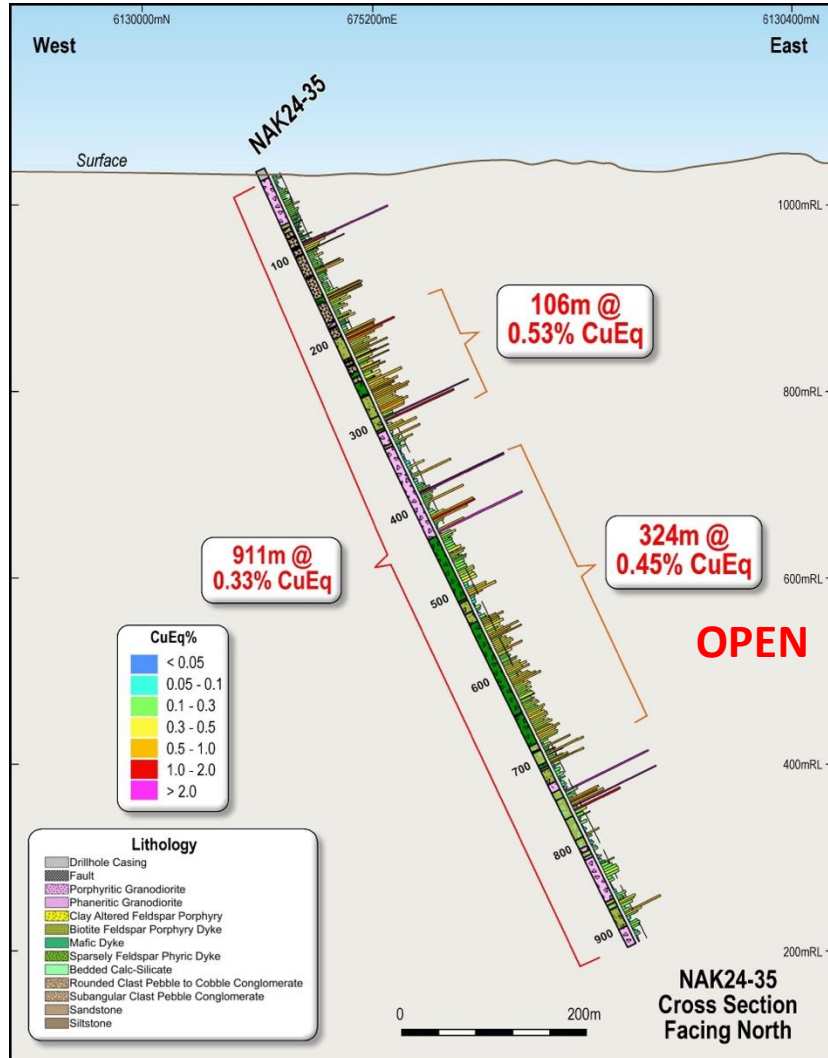


## SOUTH ZONE: NEAR SURFACE & GOLD ENRICHED

- ▶ Multiple intercepts +100 metres of 1% Copper Equivalent from surface.
  - 302m @ 1.09% CuEq from 98m downhole (within 606m @ 0.74% CuEq from surface)
  - 248M @ 1.1% CuEq (within 407m @ 0.78% CuEq from Surface)
  - 126m @ 1.05% CuEq from surface
  - 144m @ 0.9 CuEq from surface
  - 175m @ 0.76% CuEq from surface
  - 50m @ 1.01% CuEq from surface
- ▶ Near surface advantage: future development to have a quick capital payback.

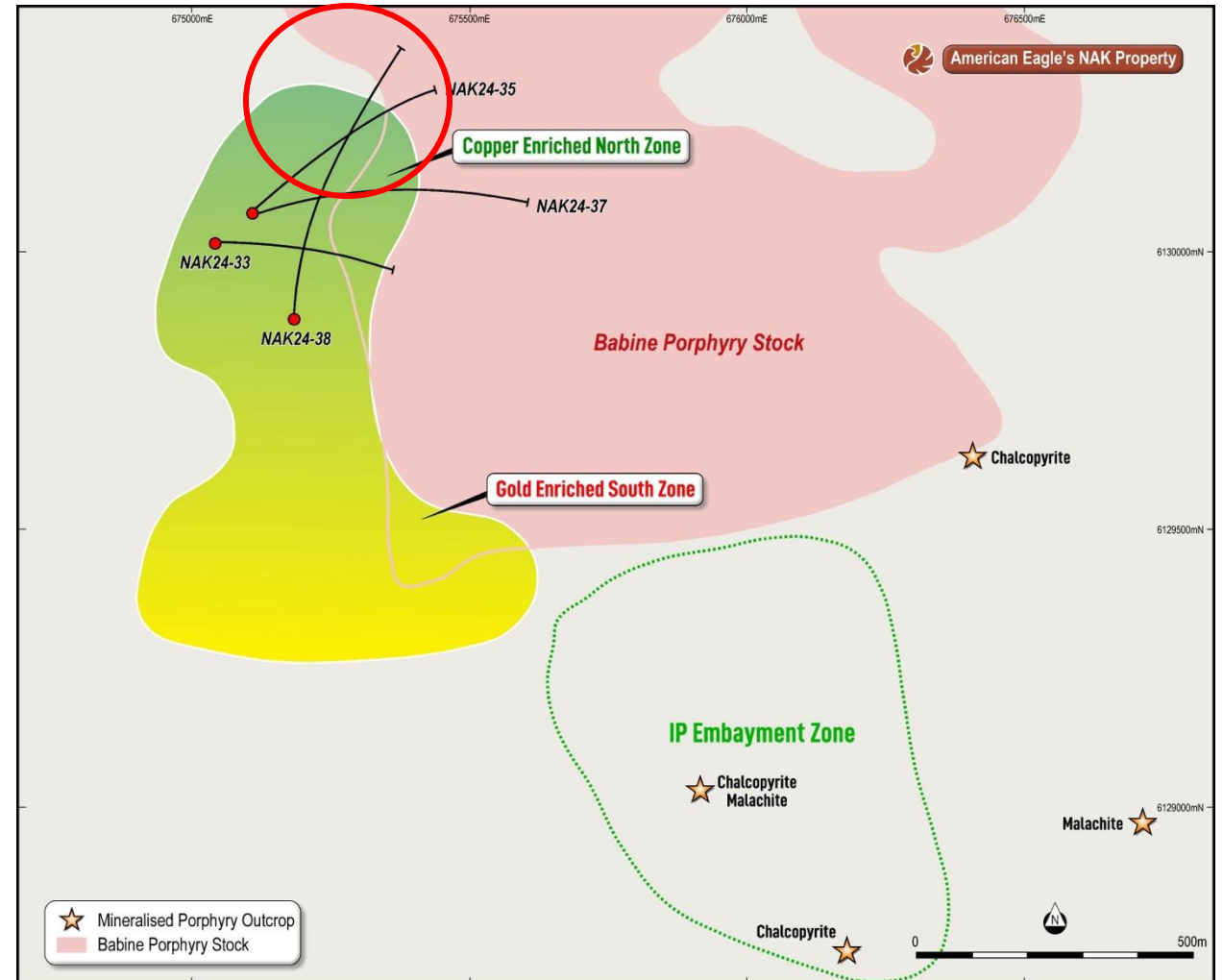


# NAK24-35: DISCOVERING A COPPER ENRICHED ZONE IN THE NORTH



## NORTH ZONE EXTENSION: PROXIMAL TO THE “JEWEL BOX?”

- ▶ Game changer – potential to transform NAK into World Class porphyry discovery.
- ▶ NAK24-33 drilled into a strongly mineralized zone of hydrothermal breccia, with elevated Au and Ag.
- ▶ Anomalous core indicating possible telescoping or porphyry center migration, suggesting strong potential at depth.
- ▶ Focus for 2025 – systematic drilling vectoring into the jewel box.





## NORTH ZONE: TWO DISCOVERIES FROM NAK24-33 & NAK24-25

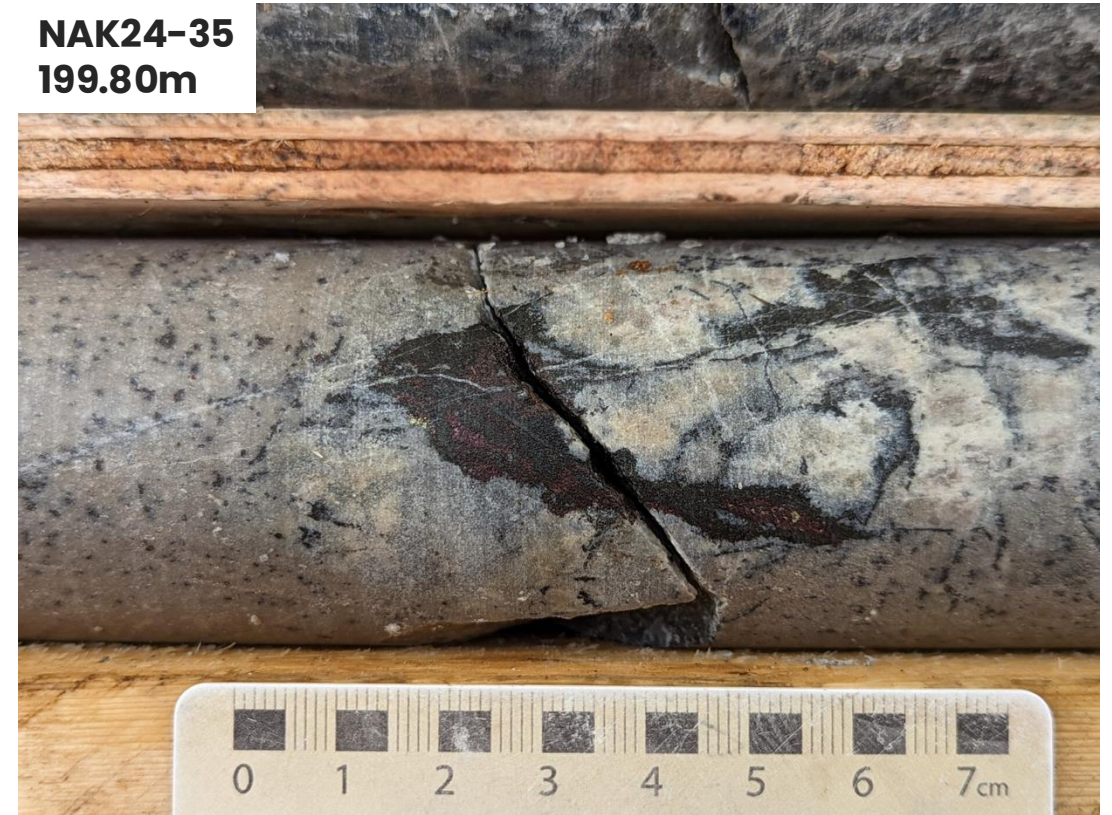
- ▶ Densely mineralized chalcopyrite and pyrite-bearing chalcedonic vein breccia cutting into the granodiorite stock.

**NAK24-33**  
**729.77m**



- ▶ Chalcopyrite, Bornite and instances of Bornite rimmed with Chalcocite in disseminations.

**NAK24-35**  
**199.80m**





## HIGH TENOR COPPER: BORNITE RIMMED WITH CHALCOCITE

### ► **NAK24-35:**

Scanning Electron Microscope (SEM) of the side grains and XRF Element Maps of the core indicated later phase sericite-stable fluids bringing in additional copper in the form of bornite and chalcocite rims.

► Bornite and Chalcocite are high-tenor copper ore minerals. Higher tenor = better, more valuable concentrate.

► Bornite and chalcocite abundance observed at NAK is unique amongst global analogues, and makes NAK a compelling development target

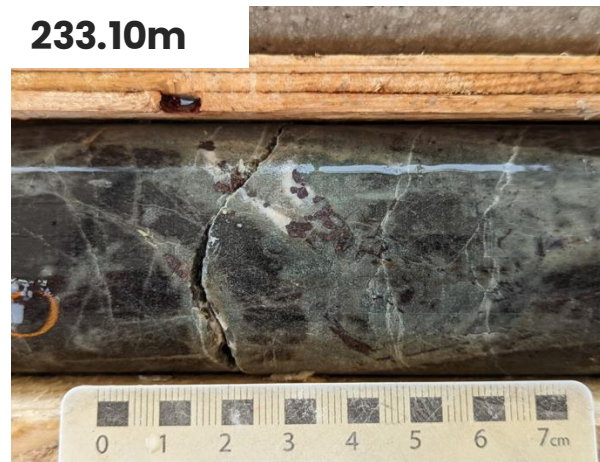
**199.80m**



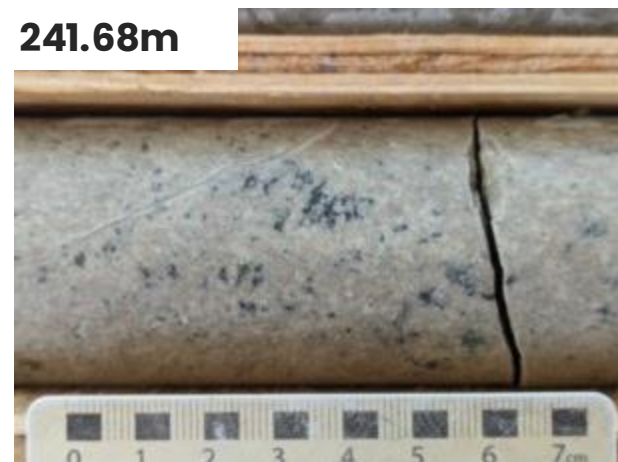
**225.87m**



**233.10m**

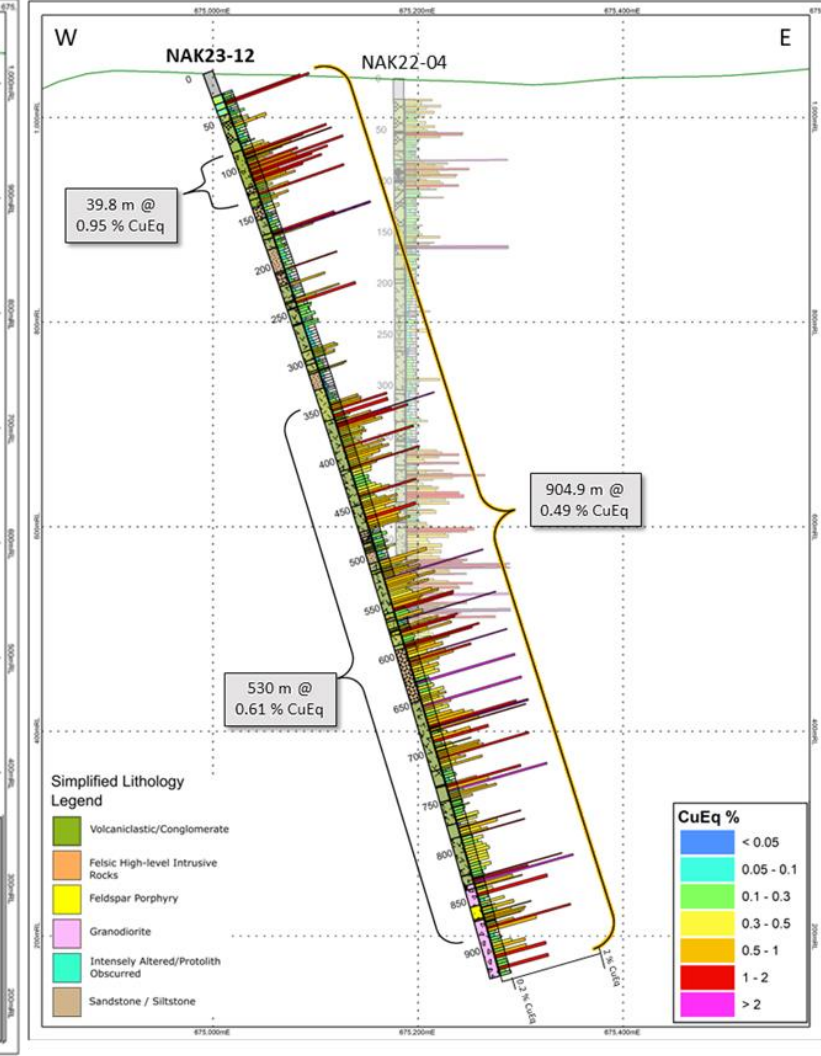
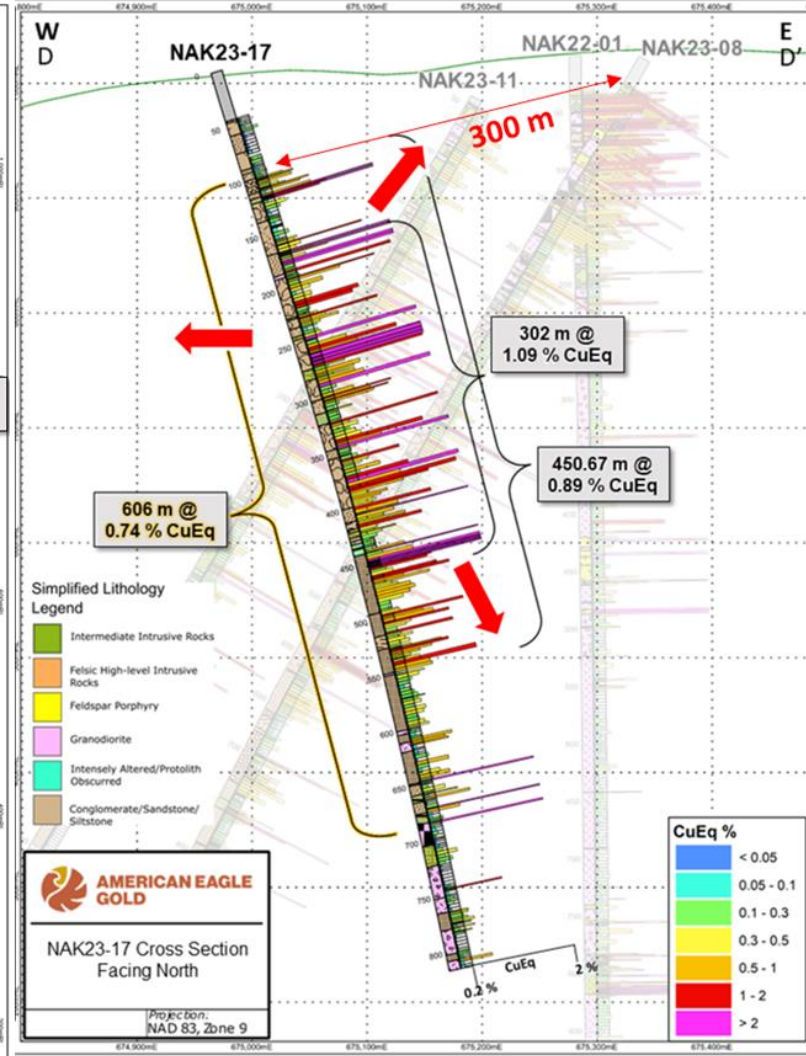
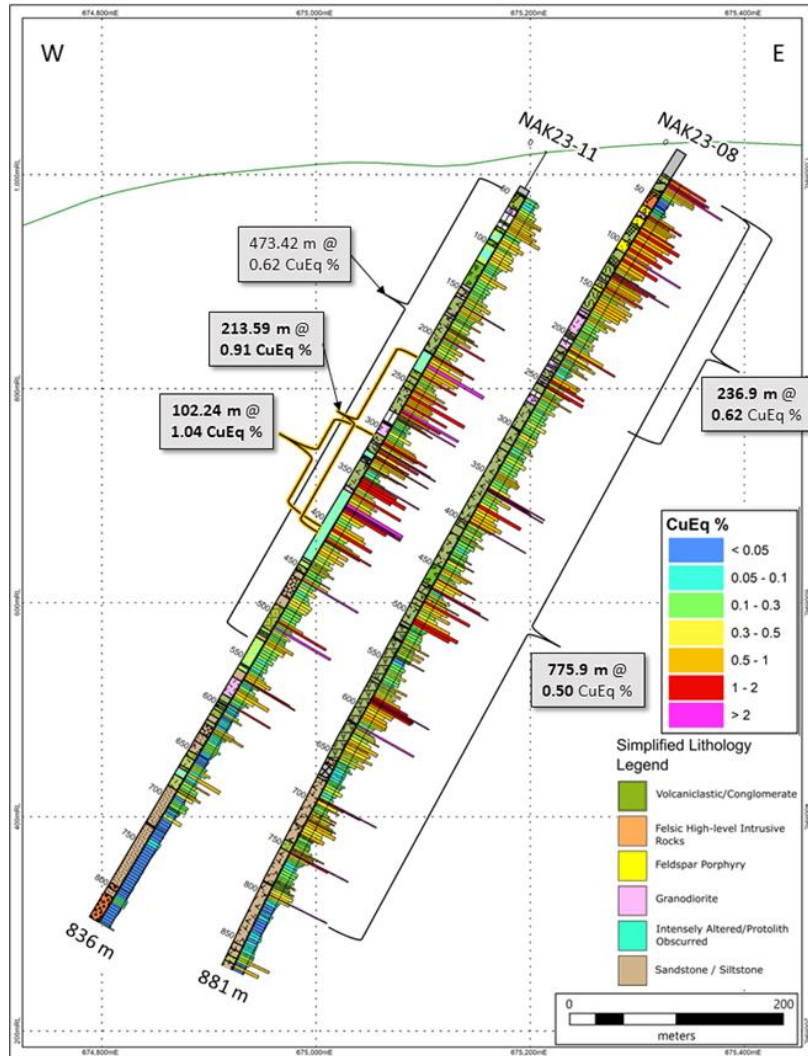


**241.68m**



Chalcopyrite, Bornite and instances of Bornite rimmed with Chalcocite in disseminations over broad intervals of sericitic altered Felsic Porphyry intrusive with sub intervals of abundant Bornite clots in host in country rock.

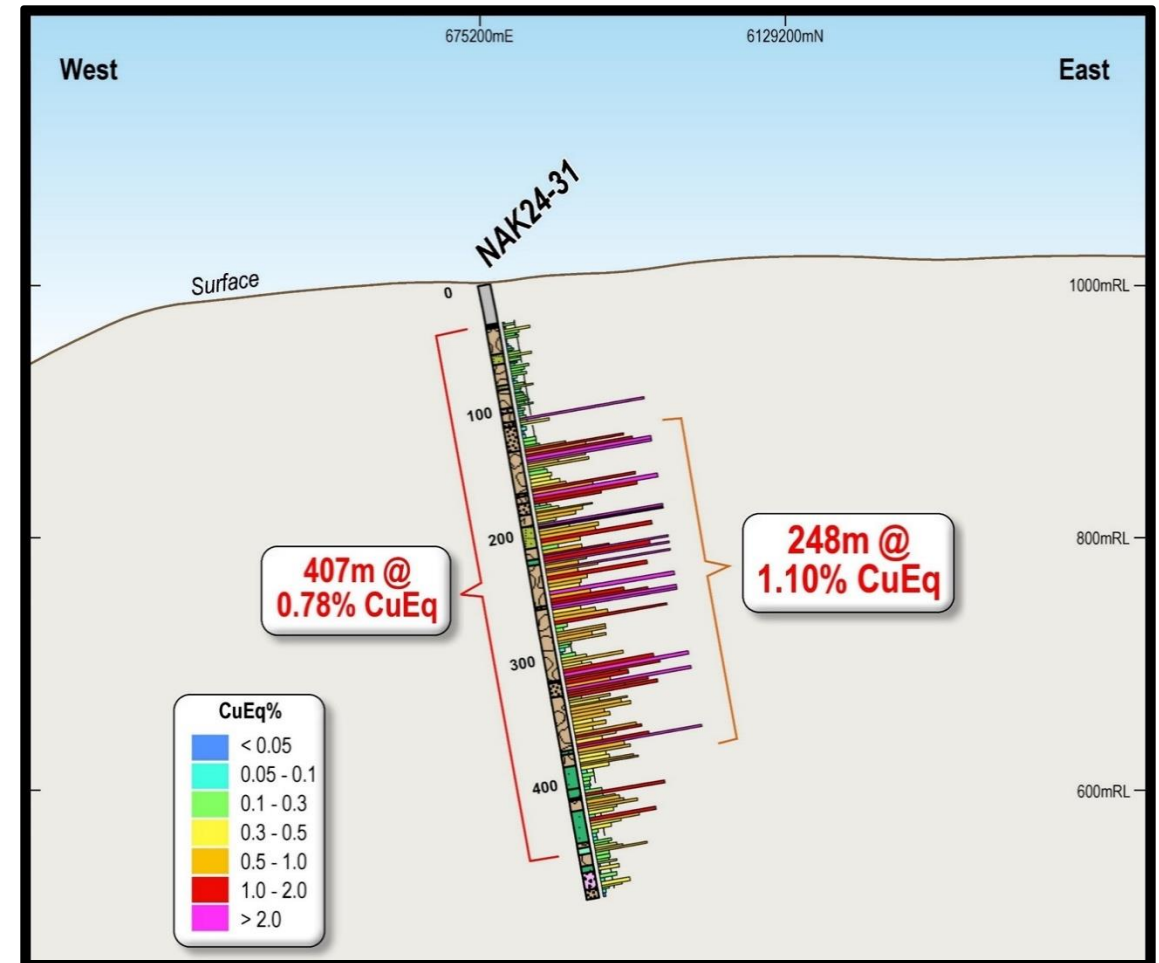
# NORTH & SOUTH ZONES: HIGH GRADE INTERCEPTS





## NAK24-31

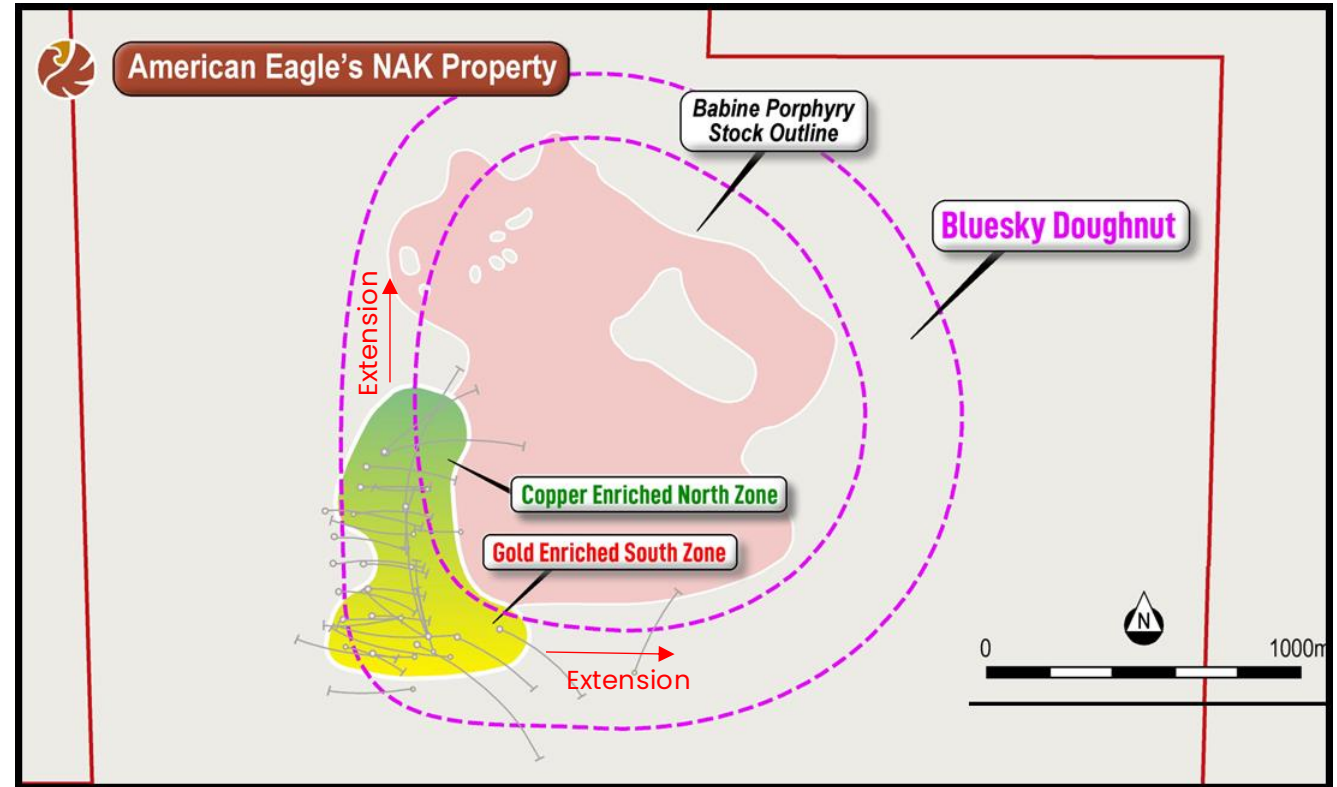
- ▶ Demonstrated continuity of high grade copper gold zone
- ▶ Extension of NAK23-17 and comes closer to surface
- ▶ Goal of 2025 is to connect stockwork zone (22-01) and high grade conglomerate (23-21 & 24-31)
- ▶ Drilling to determine if the high grade conglomerate
  - Expresses at surface to the south and east
  - extends to depth
  - continues east and south?





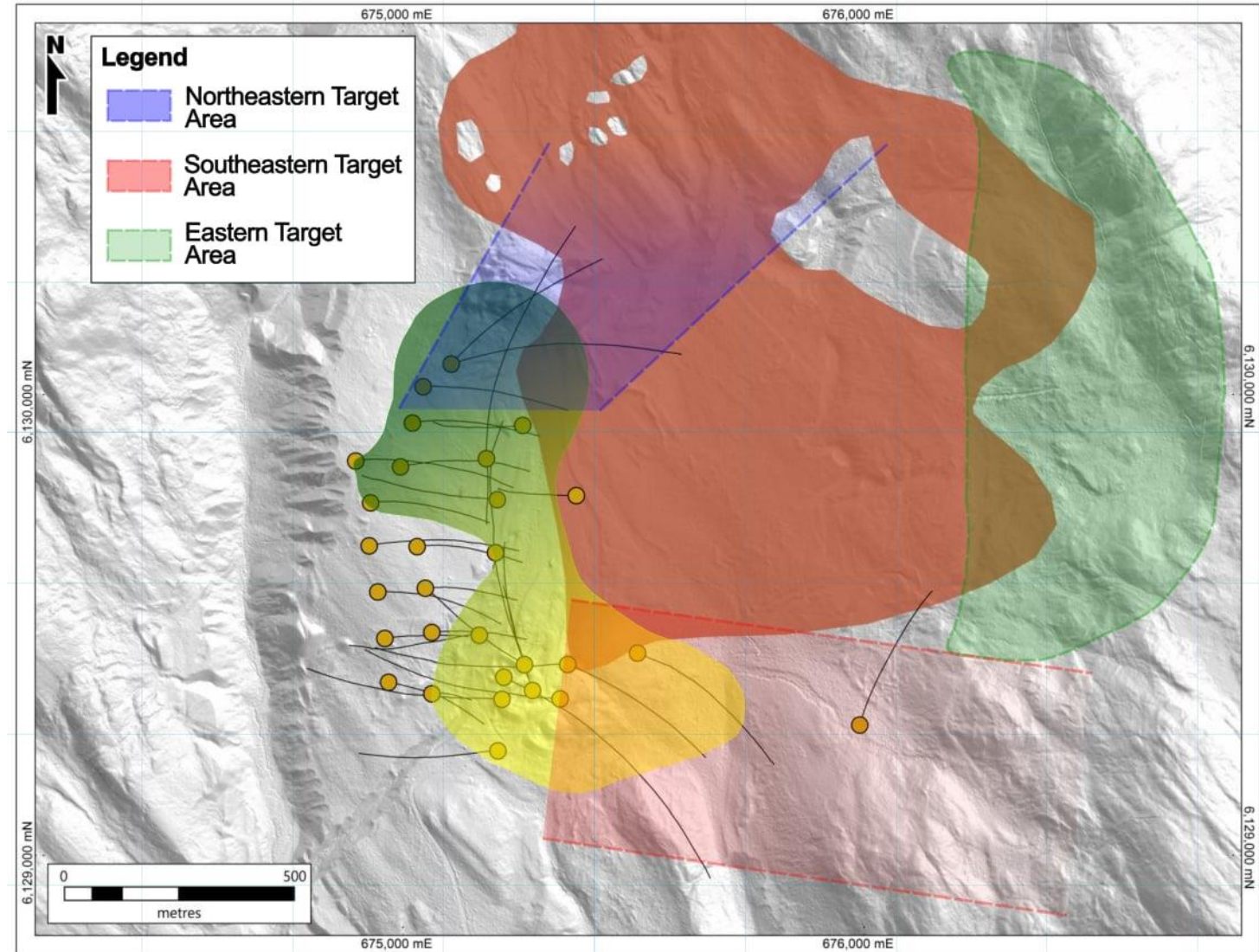
## THE “BLUESKY DOUGHNUT”

- ▶ Geophysical anomalies indicate mineralization wraps 360° around the Babine Porphyry Stock.
- ▶ Massive Scale: Potential for a multi-billion, multi-generational resource – akin to Red Chris.
- ▶ NAK23-09 and NAK24-28 indicate mineralization extends southeast. NAK24-33, NAK24-35, and NAK24-38 indicate mineralization extends north/northeast.
- ▶ 2025 – Drill test and expand current boundaries and mineralized footprint.



## 2025 Exploration Program

- 30,000m drilling
- 2-3 rigs
- \$12-\$15 million budget
- Extend north/north east
- Extend high grade gold zone south/south east
- Explore IP Embayment Zone
- Drill the “blue sky donut”



## LOOKING TOWARDS 2025

- ▶ Successfully drilled +31,000 metres across past three seasons. Continue to focus on drilling.
- ▶ Fully funded for largescale 2025, 2026 & 2027 drill programs
  - BC Tax Credit provides 30% rebate for every hard dollar put into exploration
- ▶ 2025 drill program estimated to utilize min 3 rigs and conduct 25,000+ metres of drilling
- ▶ \$12-\$15 million CAD budget 2025
- ▶ Marketing targeting institutional investors a focus of 2025

American Eagle Gold Catalysts	Status
2025 Exploration Plan	February 2025
Updated Geological Model	March 2025
Geophysics	Spring 2025
Drilling Commences	May 2025
Target high grade zone	2025
Expand north/south zones	2025
Expand boundaries of Bluesky Doughnut	2025
Metallurgy Study	2025



## CASE STUDY: DISCOVERING THE NEXT RED CHRIS

▶ NAK has similar mineralization to Red Chris, along with long, high-grade mineralized intervals.

▶ NAK's location advantage – already have significant infrastructure in place and accessible all season.

Asset Comparison	American Eagle Gold NAK	Newmont Red Chris
Location	75km from Smithers	Golden Triangle
Stage	Exploration	Production
Infrastructure	✓	✓
Deposit Type	Open Pit, Underground	Open Pit, Underground
Multiple Zones	✓	✓
Best Drill Hole	302m @ 1.09% CuEq (within 606m @ 0.74% CuEq)	1,024m @ 1.01% Cu, 1.26 g/t Au
Mineralization	Chalcopyrite, Bornite, Pyrite	Pyrite, Chalcopyrite, Bornite

## LAKE BABINE NATION: OUR COMMUNITY PARTNERSHIP

- ▶ American Eagle and Lake Babine Nation have forged a relationship built on a foundation of communication and engagement.
- ▶ On August 7th, 2023 American Eagle signed an expanded Exploration Agreement with Lake Babine First Nation in central British Columbia.
- ▶ Agreement confirms Lake Babine's consent for a 5-year exploration program and participation on environmental baseline work conducted.
- ▶ Agreement lays the foundation for respectful engagement between Lake Babine and American Eagle to pursue exploration on NAK.



## CORPORATE OVERVIEW

### KEY METRICS

TSX Venture Exchange	AE
OTCQB	AMEGF
Shares Outstanding	170M**
Warrants and Options	~16.6M**
Share Price (02/20/2025)	\$0.49
Basic Market Capitalization	~\$83M
Cash	\$37M *
Insiders and Strategics	61%*

\* Post South32 Private Placement Close

\*\* As of January 24, 2025.

### STRATEGIC PARTNERSHIP WITH South 32



- South32 owns 19.9% of American Eagle Gold shares outstanding
- Invested > \$29 million into treasury

### SHARE PRICE – AE



### STRATEGIC PARTNERSHIP WITH TECK

# Teck

- Teck made three investments into American Eagle in 2023
- Currently holds ~13.2% of American Eagle Gold shares outstanding:



## MANAGEMENT, BOARD & ADVISORS



### Anthony Moreau

CEO & Director

- 14 years of experience in the mining industry
- Iamgold in Business Development
- YMP Toronto and co-founder of the YMP Scholarship Fund



### Neil Prowse

Lead Geologist

- 15 years experience in exploration in BC
- Managed over 80,000 m of drilling.
- Oversees drilling and technical team at NAK.



### Charlie Greig

Lead Technical Advisor

- 40 years experience in exploration globally.
- Recent success includes GT Gold / Saddle North.
- Directly oversees technical team and geological interpretations



### Stephen Stewart

Chairman

- Founder of Ore Group
- 20 years of experience in the resource + finance industries
- Fund raising, M&A, resource exploration and development.



### Joel Friedman

CFO

- Over 10 + years' experience in the mining industry
- Held senior roles at Banro Corporation and Primero Mining Corporation



### Michael Mansfield

Director

- 20 years experience as an investment advisor.
- Vice-President, investment professional with IA Securities.



### James Sykes

Director

- 15 years of experience in uranium and discovery.
- Discovery of >550M lbs of U3O8 in Athabasca Basin.
- CEO of Baselode Energy and Metal Energy.



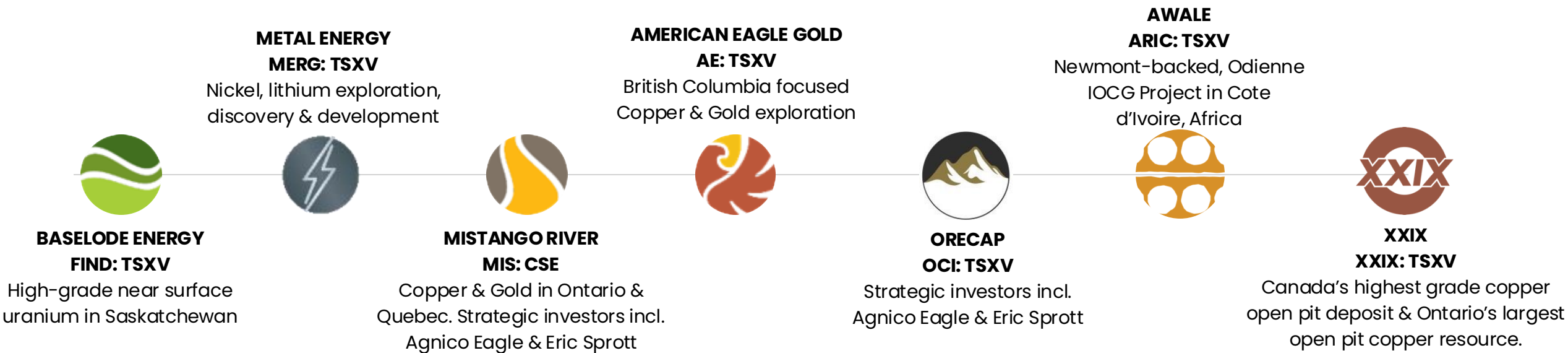
### Gord Stothart

Director

- 35 years of management, operations, and technical experience.
- Former COO and CEO of IAMGOLD

# American Eagle Gold : Part of ORE GROUP

Ore Group consists of in-house technical and financial expertise & is focused on premier jurisdictions & on metals with strong, long-term fundamentals



# FORWARD LOOKING STATEMENTS



WE ARE IN THE MINERAL EXPLORATION AND DEVELOPMENT BUSINESS. IT IS INHERENTLY RISKY, AND ALL INVESTORS SHOULD BE KEENLY AWARE OF THIS

This presentation contains forward-looking statements. All statements, other than of historical fact, that address activities, events or developments that American Eagle Gold Corp. believes, expects or anticipates will or may occur in the future (including, without limitation, statements regarding the estimation of mineral resources, exploration results, potential mineralization, potential mineral resources and mineral reserves) are forward-looking statements. Forward-looking statements are generally identifiable by use of the words “may”, “will”, “should”, “continue”, “expect”, “anticipate”, “estimate”, “believe”, “intend”, “plan” or “project” or the negative of these words or other variations on these words or comparable terminology. Forward-looking statements are subject to a number of risks and uncertainties, many of which are beyond American Eagle Gold Corp.’s ability to control or predict, that may cause the actual results of the project to differ materially from those discussed in the forward-looking statements. Factors that could cause actual results or events to differ materially from current expectations include, among other things, without limitation, failure to establish estimated mineral resources, the possibility that future exploration results will not be consistent with American Eagle Gold Corp.’s expectations, changes in world gold markets and other risks disclosed to the Canadian provincial securities regulatory authorities. Any forward-looking statement speaks only as of the date on which it is made and, except as may be required by applicable securities laws, American Eagle Gold Corp. disclaims any intent or obligation to update any forward-looking statement

## CAUTIONARY STATEMENT REGARDING HISTORICAL RESOURCES

The reader is cautioned that American Eagle Gold Corp. has not undertaken any independent investigation of the dimensions, quantity or grade of the mineralization referred to above, therefore this historical data should not be relied upon. American Eagle Gold Corp. views this historical data as a conceptual indication of the potential size and grade of deposits in the area, and this data is relevant to ongoing exploration efforts. In view of when the resources were estimated and the differences in metal price and operating costs prevailing at the time compared to today.

American Eagle Gold Corp. does not consider the resources to be compliant with respect to requirements of NI43-101. American Eagle Gold Corp. does not treat any of the historical resources as Current mineral resources or mineral reserves

The technical information contained in this American Eagle Gold Corp. Presentation has been reviewed and approved by Mark Bradley, P.Geo for American Eagle Gold Corp., who is a Qualified Person as defined in “National Instrument 43-101, Standards of Disclosure for Mineral Projects.” All currency numbers are in \$CAD unless otherwise stated.

\*Note on Conceptual Exploration Targets: The potential tonnage and grade of these targets are conceptual in nature. There has been insufficient exploration to define them as mineral resources and it is uncertain if further exploration will result in the targets being delineated as mineral resources. American Eagle Gold Corp. only considers these targets to be an indication of the presence of mineralization on the property and of the potential of property to host an economic deposit at this time. American Eagle Gold Corp. advises that no one should consider these targets as mineral resources.





**Anthony Moreau, CEO American Eagle**

**AMoreau@americaneaglegold.ca**

**(416) 644-1567**



## THE NORTH

NAK24-35



Disseminated bornite throughout a crowded porphyry intrusive in NAK24-33 provided further evidence of jewel box potential.

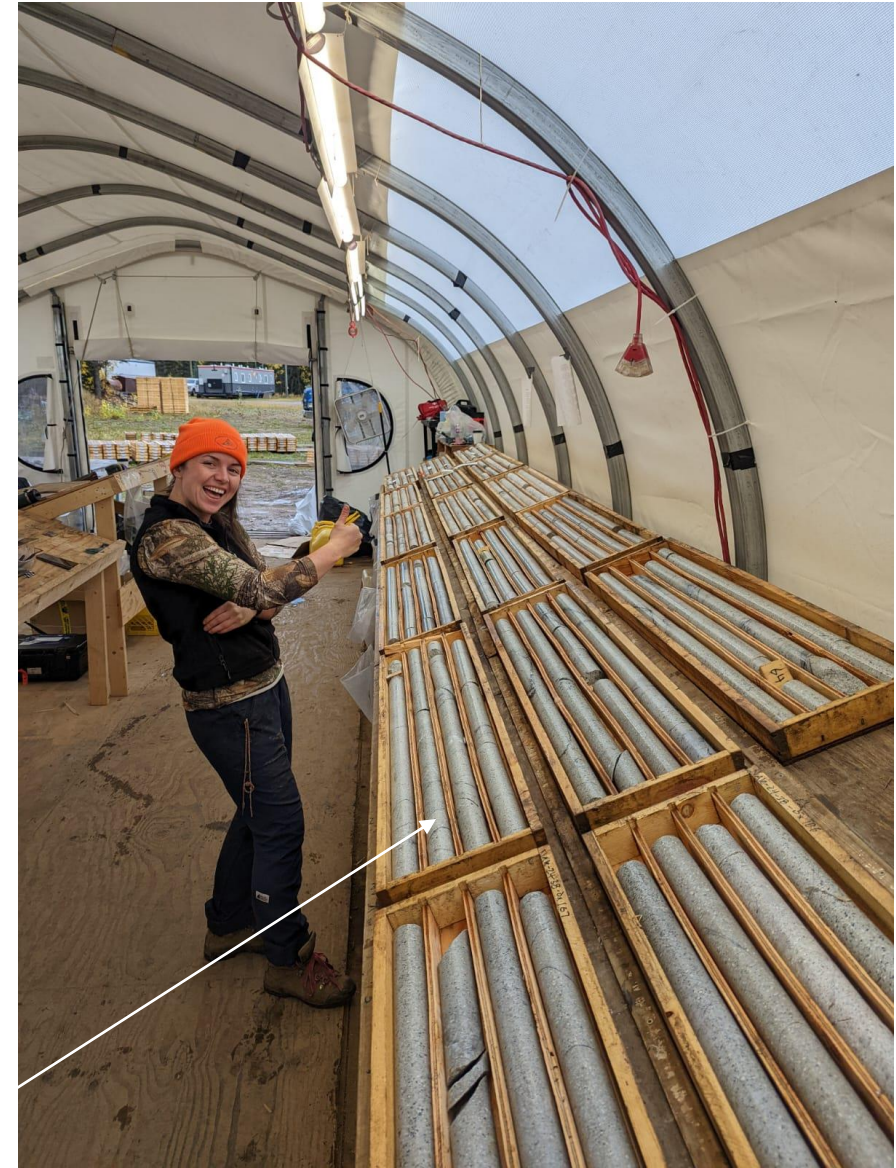


## THE NORTH

NAK24-35



NAK24-38



Disseminated Copper  
[americaneaglegold.ca](http://americaneaglegold.ca)

AE: TSXV | AMEGF: OTCQB

Part of the  OREGROUP



## THE NORTH

NAK24-35



NAK24-35



Disseminated Copper



## THE NORTH

The bottom of NAK24-33 presented chalcocite /bornite veining and later stage hydrothermal quartz-chalcopyrite breccia, potentially indicative of migrating/multiple porphyry centres.

